



PRICE GUIDE NZ
MARCH 2023



**AUSTRALASIA'S LARGEST RANGE OF COMMERCIAL
REFRIGERATION, CATERING, KITCHEN EQUIPMENT, RESTAURANT
FURNITURE, COOKWARE and TABLEWARE**



EASY WAYS TO BUY



AU: 1300 659 409
NZ: 09 415 6470



AU: 02 9771 3061
NZ: 09 415 6471



sales@foodequipment.com.au
sales@fedproducts.co.nz



spares@fedservices.com.au
service@fedproducts.co.nz



We will beat any competitors price*

**1,000'S MORE
PRODUCTS ONLINE**

**www.foodequipment.com.au
www.fedproducts.co.nz**

CONTENTS

GAS & ELECTRIC RANGE	4-8
• Gasmax 800 Series	4
• Gas Griddle, Toasters & Salamanders	5
• Kebab Units & Slicers	5
• Waterless Gas Woks	5
• Fagor 700 Series	6
• Fagor Kore 900 Series	7
• Gas Fryers	8
• Oil Flitering	8
COMBI + CONVECTION + MICROWAVE OVENS	9-10
BENCHSTAR BENCHTOP EQUIPMENT	11-12
WARMING EQUIPMENT	13
BEVERAGE + ICE CREAM	14
DISPLAY SOLUTIONS	15
PIZZA / SALAD / SANDWICH PREPARATION	16-17
REFRIGERATION	18-22
• Beverage Fridges	18
• Upright Fridges & Freezers	18-19
• Workbench Fridges & Freezers	19
• Bar Fridges & Freezers	20
• Meat Dry Aging Cabinets	20
• Wine Coolers	20
• Supermarket Island Fridges & Freezers	20-21
• Chest Freezers	21
• Ice Makers	21-22
• Blast Chillers	22
DISHWASHERS	23
BAKERY + PIZZA	24-25
FOOD PREP + BUTCHER	26-27
• Blenders and Food Prep Machines	26-27
• Butchery Equipment	27
FOOD CARRIERS + STAINLESS STEEL COOKWARE	201-202
STAINLESS STEEL BENCHES	30-34
• Modular Systems Mobile Bench with Drawers	30
• Modular Systems Kitchen Tidy Cabinets	30
• Modular Systems Premium Stainless Steel Benches and Wall Shelves	31-32
• Modular Systems Premium Sink Bench with Pot Shelf	31
• Modular Systems Extra Table Shelves, Legs & Castors	32
• Modular Systems Trolleys	32
• Modular Systems Sinks & Taps	32
• Modular Systems GN Rack	33
• Modular Systems Racking	33-34

Gas & Electric Range



Gas Burner with Oven 800 Series



Specifications:
GBS4T 610x855x1128 | 120kg | 162MJ/h
GBS4TLPG 610x855x1128 | 120kg | 168MJ/h
GBS6T 914x855x1128 | 166kg | 228MJ/h
GBS6TLPG 914x855x1128 | 166kg | 234MJ/h
S-GRDE 300x730x80+10mm locators

CODE	DESCRIPTION	PRICE
GBS4T	NG 4 Burner with Oven	\$3,990.00
GBS4TLPG	LPG 4 Burner with Oven	\$3,990.00
GBS6T	NG 6 Burner with Oven	\$4,590.00
GBS6TLPG	LPG 6 Burner with Oven	\$4,590.00
S-GRDE	Lay on Griddle Plate	\$399.00

Open Burners 800 Series



Optional
faucet
available

Specifications:
RB-1E | RB-1ELPG 450x660x500 | 35kg | 60MJ/h
RB-2E | RB-2EULPG 300x770x380+60 | 34kg | 48MJ/h
RB-2-S 360x770x470 | 10kg | RB-2-SEN 299x600x659 | 12kg

CODE	DESCRIPTION	PRICE
RB-1E	Dual Ring Burner NG	\$1,699.00
RB-1ELPG	Dual Ring Burner LPG	\$1,699.00
RB-2E	2 Burner NG	\$1,799.00
RB-2EULPG	2 Burner LPG	\$1,799.00
RB-2-SE	Stand	\$330.00
RB-2-SEN	Stand with solid undershelf	\$330.00

Open Burners 800 Series



Specifications:
RB-4E | RB-4EULPG 602x824x575 | 60kg | 96MJ/h
RB-6E | RB-6EULPG 902x824x575 | 84kg | 144MJ/h
RB-4-SE | RB-4-SEN 600x600x659 | 13kg
RB-6-SE | RB-6-SEN 899x600x659 | 21kg

CODE	DESCRIPTION	PRICE
RB-4E	4 Burner NG	\$2,199.00
RB-4EULPG	4 Burner LPG	\$2,199.00
RB-6E	6 Burner NG	\$2,899.00
RB-6EULPG	6 Burner LPG	\$2,899.00
RB-4-SE	Stand	\$460.00
RB-4-SEN	Stand with solid undershelf	\$460.00
RB-6-SE	Stand	\$519.00
RB-6-SEN	Stand with solid undershelf	\$519.00

Char Grill Tops 800 Series



Specifications:
QR-14E | QR-14ELPG 354x824x575 | 56kg | 44MJ/h
QR-24E | QR-24ELPG 609x824x575 | 95kg | 88MJ/h
QR-36E | QR-36ELPG 914x824x575 | 134kg | 132MJ/h
QR-48E | QR-48ELPG 1121x824x575 | 174kg | 176MJ/h

CODE	DESCRIPTION	PRICE
QR-14E	2 Burner NG	\$1,699.00
QR-14ELPG	2 Burner LPG	\$1,699.00
QR-24E	4 Burner NG	\$2,599.00
QR-24ELPG	4 Burner LPG	\$2,599.00
QR-36E	6 Burner NG	\$2,999.00
QR-36ELPG	6 Burner LPG	\$2,999.00
QR-48E	8 Burner NG	\$3,799.00
QR-48ELPG	8 Burner LPG	\$3,799.00

Stands - 800 Series



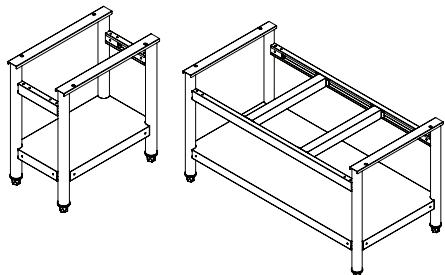
CODE	COMPATIBLE MODELS	PRICE
QR-14-SE	QR-14E	\$379.00
RGT-16-SE	RGT-16E	\$390.00
QR-24-SE	QR-24E & RGT-24E	\$449.00
QR-36-SE	QR-36E & RGT-36E	\$519.00
QR-48-SE	QR-48E & RGT-48E	\$599.00

Basting Rails - 800 Series



CODE	COMPATIBLE MODELS	PRICE
QR-24-BR	QR-24E & RGT-24E	\$189.00
QR-36-BR	QR-36E & RGT-36E	\$269.00
QR-48-BR	QR-48E & RGT-48E	\$359.00

Solid Undershelf Stands - 800 Series



CODE	COMPATIBLE MODELS	PRICE
QR-14-SEN	QR-14E	\$409.00
QR-24-SEN	QR-24E & RGT-24E	\$409.00
QR-36-SEN	QR-36E & RGT-36E	\$459.00
QR-48-SEN	QR-48E & RGT-48E	\$539.00

Infill Benches - 800 Series



CODE	COMPATIBLE MODELS	PRICE
WBB-0300R	RB Cooktop / GBS Grill & Toaster / QR Chargrill / GG Griddle	\$789.00
WBB-0450R	RB Cooktop / GBS Grill & Toaster / QR Chargrill / GG Griddle	\$899.00

Griddle Tops

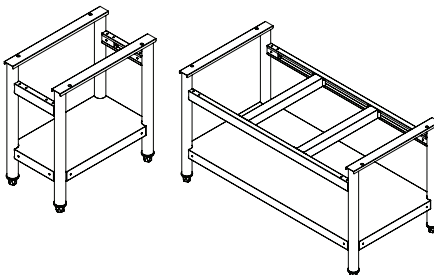


Specifications:

GG-12 | GG-12LPG 336x761x407 | 40kg | 30/33MJ/h
 GG-24 | GG-24LPG 610x761x412 | 80kg | 60/66MJ/h
 GG-36 | GG-36LPG 915x761x412 | 110kg | 90/99MJ/h
 GG-48 | GG-48LPG 1220x761x412 | 152kg | 120/132MJ/h

CODE	DESCRIPTION	PRICE
GG-12	NG 1 Burner	\$1,599.00
GG-12LPG	LPG 1 Burner	\$1,599.00
GG-24	NG 2 Burner	\$1,999.00
GG-24LPG	LPG 2 Burner	\$1,999.00
GG-36	NG 3 Burner	\$2,799.00
GG-36LPG	LPG 3 Burner	\$2,799.00
GG-48	NG 4 Burner	\$3,699.00
GG-48LPG	LPG 4 Burner	\$3,699.00
GG-12-SE	Stand	\$329.00
GG-24-SE	Stand	\$439.00
GG-36-SE	Stand	\$519.00
GG-48-SE	Stand	\$599.00

Solid Undershelf Stands - GG Series



CODE	COMPATIBLE MODELS	PRICE
GG-12-SEN	GG-12 & GG-12LPG	\$329.00
GG-24-SEN	GG-24 & GG-24LPG	\$439.00
GG-36-SEN	GG-36 & GG-36LPG	\$519.00
GG-48-SEN	GG-48 & GG-48LPG	\$599.00

Griddle + Toaster with Cabinet



Specifications:

GGS-24 | GGS-24LPG 610x815x970 | 163kg | 46.5MJ/h
 GGS-36 | GGS-36LPG 915x815x970 | 178kg | 77.5MJ/h

CODE	DESCRIPTION	PRICE
GGS-24	NG	\$3,799.00
GGS-24LPG	LPG	\$3,799.00
GGS-36	NG	\$4,499.00
GGS-36LPG	LPG	\$4,499.00

Gas Salamander + Chargrill



Specifications:

REB-02E | REB-02ELPG 914x522x580 | 65kg | 42MJ/h
 REB-03E | REB-03ELPG 914x522x580 | 70kg | 42MJ/h
 SMB-7-0900 900x700x1380 | 30kg
 SMB-8-1200 1200x824x1380 | 37kg

CODE	DESCRIPTION	PRICE
REB-02E	NG	\$2,699.00
REB-02ELPG	LPG	\$2,699.00
REB-03E	NG	\$3,699.00
REB-03ELPG	LPG	\$3,699.00
SMB-7-0900	Stand	\$1,399.00
SMB-8-1200	Stand	\$1,499.00

Semi-Automatic Kebab Unit



Specifications:

KMB4E | KMB4ELPG 580x700x1030 | 80kg | 68MJ/h | 240V | 250kW | 10A

CODE	DESCRIPTION	PRICE
KMB4E	NG	\$4,999.00
KMB4ELPG	LPG	\$4,999.00

Electric Kebab Knife



Specifications:

KS100E 240V | 10A | CKS100 Charger - 240V | 10A
 KS80AS 240V | 10A

CODE	DESCRIPTION	PRICE
KS100E	Corded	\$489.00
CKS100	Cordless - 2x Li-Ion Batteries	\$819.00
CKS100-battery	Li-Ion Battery	\$139.00
KS80AS	Corded	\$919.00

Heavy Duty S/S Waterless Gas Woks



Specifications:

WW-1N 600x850x1300 | 65kg | Duckbill 120MJ/h Chimney 130MJ/h
 WW-1L 600x850x1300 | 65kg | Duckbill 110MJ/h Chimney 115MJ/h
 WW-2N 1200x850x1300 | 120kg | Duckbill 240MJ/h Chimney 260MJ/h
 WW-2L 1200x850x1300 | 120kg | Duckbill 220MJ/h Chimney 230MJ/h
 WW-3N 1800x850x1300 | 175kg | Duckbill 360MJ/h Chimney 390MJ/h
 WW-3L 1800x850x1300 | 175kg | Duckbill 330MJ/h Chimney 345MJ/h

CODE	DESCRIPTION	PRICE
WW-1N	NG	\$3,699.00
WW-1L	LPG	\$3,699.00
WW-2N	NG	\$4,999.00
WW-2L	LPG	\$4,999.00
WW-3N	NG	\$6,199.00
WW-3L	LPG	\$6,199.00

Gas equipment must be commissioned by an authorised technician.

Price excludes GST. Prices and specifications are subject to change without notice. Pictures are for illustrative purpose and final product may differ.

700 Kore Series



Gas Boiling Tops 700 Series



Specifications:
C-G740H 800x730x290 | 56kg | 115.2MJ/h
C-G760H 1200x730x290 | 78kg | 172.8MJ/h

CODE	DESCRIPTION	PRICE
C-G740H	4 Burner NG	\$5,099.00
C-G760H	6 Burner NG	\$6,599.00

Gas Ranges 700 Series



Specifications:
C-G741H 800x730x850 | 107kg | 146.16MJ/h
C-G761H 1200x730x850 | 138kg | 203.76MJ/h

CODE	DESCRIPTION	PRICE
C-G741H	4 Burner NG	\$8,499.00
C-G761H	6 Burner NG	\$11,299.00

Charcoal Grills 700 Series



Specifications:
B-G705 400x730x290 | 28.5kg | 29.16MJ/h
B-G710 800x730x290 | 70kg | 58.32MJ/h
B-G7101 800x730x290 | 70kg | 58.32MJ/h

CODE	DESCRIPTION	PRICE
B-G705	1 Cast Iron Grid	\$4,899.00
B-G710	2 Cast Iron Grids	\$7,599.00
B-G7101	2 Mild Steel Grids	\$7,599.00

Fry-Tops with Thermostatic Control - 700 Series



Specifications:
FT-G705L 400x730x290 | 70kg | 27MJ/h
FT-G710L 800x730x290 | 128kg | 54MJ/h
FT-G705CL 400x730x290 | 70kg | 27MJ/h
FT-G710CL 800x730x290 | 128kg | 54MJ/h

CODE	DESCRIPTION	PRICE
FT-G705L	1 Zone 330x550 Mild Steel Plate	\$4,299.00
FT-G710L	2 Zone 660x550 Mild Steel Plate	\$6,299.00
FT-G705CL	1 Zone 330x550 Chrome Plate	\$5,699.00
FT-G710CL	2 Zone 660x550 Chrome Plate	\$8,399.00

Pasta Cooker - 700 Series



Specifications:
CP-G7140 400x730x850 | 55kg | 59.4MJ/h
CP-G7240 800x730x850 | 89kg | 118.8MJ/h
CP-G7126 400x730x850 | 55kg | 36MJ/h
CP-G7226 800x730x850 | 89kg | 72MJ/h

CODE	DESCRIPTION	PRICE
CP-G7140	3 x 1/3 Size Baskets Included	\$7,799.00
CP-G7240	6 x 1/3 Size Baskets Included	\$12,999.00
CP-G7126	2 x 1/3 Size Baskets Included	\$7,799.00
CP-G7226	4 x 1/3 Size Baskets Included	\$12,999.00

Fryer - 700 Series



Specifications:
F-G7115 400x730x850 | 60kg | 54MJ/h
F-G7215 800x730x850 | 110kg | 108MJ/h

CODE	DESCRIPTION	PRICE
F-G7115	1 Large Baskets Included	\$6,799.00
F-G7215	2 Large Baskets Included	\$11,999.00

Work Tops - 700 Series



Specifications:
EN-705 350x775x290 | 20kg
EN-710 700x775x290 | 29kg

CODE	DESCRIPTION	PRICE
EN-705	S/S Work Top	\$1,399.00
EN-710	S/S Work Top	\$1,899.00

Stands - 700 Series



CODE	DESCRIPTION	PRICE
MB-705	350x775x560	\$879.00
MB-710	700x775x560	\$1,099.00
MB-715	1050x777x560	\$1,399.00
MB-K-DOOR	Left/Right Reversible Hinged Door	\$689.00

Gas equipment must be commissioned by an authorised technician.

Price excludes GST. Prices and specifications are subject to change without notice. Pictures are for illustrative purpose and final product may differ.

Cooktops Kore 900 Series



Specifications:

C-G940H 800x930x290 | 75kg | 123.12MJ/h | 34.2kW
C-G960H 1200x930x290 | 148kg | 180.72MJ/h | 50.2kW

CODE	DESCRIPTION	PRICE
C-G940H	4 Burner 3x 28.8MJ + 1x 36.72MJ NG or LPG	\$6,399.00
C-G960H	6 Burner 5x 28.8MJ + 1x 36.72MJ NG or LPG	\$8,999.00

Cooktops with Oven Kore 900 Series



Specifications:

C-G941H 800x930x850 | 165kg | 154.08MJ/h | 42.8kW
C-G961OPH 1200x930x850 | 268kg | 238.32MJ/h | 66.2kW

CODE	DESCRIPTION	PRICE
C-G941H	4 Burner with oven 3x 28.8MJ + 1x 36.72MJ NG or LPG	\$10,499.00
C-G961OPH	6 Burner with oven 5x 28.8MJ + 1x 36.72MJ NG or LPG	\$16,199.00

Griddle Tops / Hotplates Kore 900 Series



Specifications:

20mm thick iron fry-top
FT-G905L 400x930x290 | 75kg | 33.3MJ/h | 9.25kW
FT-G910L 800x930x290 | 149kg | 66.6MJ/h | 18.5kW

CODE	DESCRIPTION	PRICE
FT-G905L	1 Area NG or LPG	\$5,199.00
FT-G910L	2 Areas NG or LPG	\$7,599.00

Chargrills Kore 900 Series



Specifications:

B-G9051 400x930x850 | 55kg | 39.6MJ/h | 11kW
B-G9101 800x930x850 | 95kg | 79.2MJ/h | 22kW

CODE	DESCRIPTION	PRICE
B-G9051	1 Area Cast Iron NG or LPG	\$7,699.00
B-G9101	2 Areas Cast Iron NG or LPG	\$10,099.00

Fryers - Kore 900 Series



Specifications:

F-G9115 400x930x850 | 90kg | 54MJ/h | 15kW
F-G9215 800x930x850 | 160kg | 108MJ/h | 30kW
F-G9121R 400x930x850 | 90kg | 75.6MJ/h | 21kW
F-G9221 800x930x850 | 160kg | 151.2MJ/h | 42kW

CODE	DESCRIPTION	PRICE
F-G9115	1x 15L + 1x large basket NG or LPG	\$7,799.00
F-G9215	2x 15L + 2x large basket NG or LPG	\$14,199.00
F-G9121R	2x 21L + 2x small basket NG or LPG	\$9,299.00
F-G9221	2x 21L + 4x small basket NG or LPG	\$16,599.00

Pasta / Noodle Cooker Kore 900 Series



Specifications:

CP-G905 400x930x850 | 70kg | 57.6MJ/h | 16kW

CODE	DESCRIPTION	PRICE
CP-G905	Tank Size GN 1/1 NG or LPG	\$9,199.00

Bain Marie Boiling Pan Kore 900 Series



Specifications:

M-G915BM 800x930x850mm | 160kg | 86.4MJ/h | 24kW
M-G915BMLPG 800x930x850mm | 160kg | 86.4MJ/h | 24kW

CODE	DESCRIPTION	PRICE
M-G915BM	150L Capacity NG	\$19,999.00
M-G915BMLPG	150L Capacity LPG	\$19,999.00

Tilting Bratt Pans Kore 900 Series



Specifications:

SB-G910I 800x930x850 | 235kg | 64.8MJ/h | 18kW
SB-G910IM 800x930x850 | 211kg | 64.8MJ/h | 18kW
SB-G915IM 1200x930x850 | 228kg | 90MJ/h | 25kW

CODE	DESCRIPTION	PRICE
SB-G910I	90L Capacity NG or LPG	\$18,999.00
SB-G910IM	90L Capacity NG or LPG	\$22,999.00
SB-G915IM	120L Capacity NG or LPG	\$26,699.00

Infill Benches & Stands Kore 900 Series



CODE	DESCRIPTION	PRICE
EN-905	Bench 400x930x290 40kg	\$1,599.00
EN-910	Bench 800x930x290 80kg	\$2,099.00
MB-905	Stand 400x930x560 38kg	\$1,069.00
MB-910	Stand 800x930x560 44kg	\$1,199.00
MB-915	Stand 1200x930x560 56kg	\$1,499.00
MB-K-DOOR	Left/Right Reversible Hinged Door	\$689.00

Gas equipment must be commissioned by an authorised technician.

Price excludes GST. Prices and specifications are subject to change without notice. Pictures are for illustrative purpose and final product may differ.

Gas & Electric Range



V Pan Pasta & Noodle Cooker



Specifications:

PC150-6	PC150-6LPG	401x860x1293 78kg 150MJ/h
PC150-9	PC150-9LPG	571x860x1293 101kg 190MJ/h
CODE	DESCRIPTION	PRICE
PC150-6	NG 6xBaskets	\$4,599.00
PC150-6LPG	LPG 6xBaskets	\$4,599.00
PC150-9	NG 9xBaskets	\$6,499.00
PC150-9LPG	LPG 9xBaskets	\$6,499.00
302110331	Pasta / Noodle Basket	\$79.00
RC400T-18	Adjustable Leg	\$29.00

Superfast Gas-Tube Single Vat Fryers



Specifications:

RC300E | RC300ELPG 394x759x1195 | 49kg | 90MJ/h
RC400E | RC400ELPG 394x769x1195 | 50kg | 120MJ/h
RC500E | RC500ELPG 533x769x1195 | 55kg | 150MJ/h

CODE	DESCRIPTION	PRICE
RC300E	NG 18L 3xBurners 2xBaskets	\$2,499.00
RC300ELPG	LPG 18L 3xBurners 2xBaskets	\$2,499.00
RC400E	NG 22L 4xBurners 2xBaskets	\$2,699.00
RC400ELPG	LPG 22L 4xBurners 2xBaskets	\$2,699.00
RC500E	NG 37L 5xBurners 3xBaskets	\$3,499.00
RC500ELPG	LPG 37L 5xBurners 3xBaskets	\$3,499.00
USG-1	Side Splash Guard	\$89.00

Superfast Gas-Tube Twin Vat Fryers



Specifications:

RC400TE | RC400TELPG 534x769x1326 | 55kg | 120MJ/h

CODE	DESCRIPTION	PRICE
RC400TE	NG 2x18L 4xBurners	\$4,299.00
RC400TELPG	LPG 2x18L 4xBurners	\$4,299.00

Fryer Mate Two Basket Fry Warming Station



Specifications:

VX15E 400x750x1250 | 40kg | 240V | 940W | 10A

CODE	DESCRIPTION	PRICE
VX15E	Temp. Range 30-95°C	\$1,799.00

V Pan Deep Fryer



Specifications:

VP122 | VP122LPG 400x784x1178 | 65kg | 104MJ/h

CODE	DESCRIPTION	PRICE
VP122	NG 22L 1xBurners 2xBaskets	\$3,999.00
VP122LPG	LPG 22L 1xBurners 2xBaskets	\$3,999.00
RC300-Basket	Fryer Basket	\$59.00
RC400T-18	Adjustable Leg	\$29.00
RC500-15	Oil Drainage Extension Pipe	\$19.00
70201107200L	Basket Supporting Grid	\$59.00

Easy Cleaning Equipment



CODE	DESCRIPTION	PRICE
AS-BOILOUT5KG	OilVolution Fryer Cleaner	\$229.00
AS-SCOURTOOLSSW	Scourer	\$129.00
AF-SCOURERSTRIPW	18x Scourer Pads	\$39.00
AS-CLEARODW	Clearing Rod	\$29.00

Combi, Convection, Microwave Ovens

iKore Concept Combi Ovens



FAGOR 

Specifications:

CW-061ERSWS 898x817x846 | 115kg | 11.1/3~NkW/A
CW-101ERSWS 898x817x1117 | 140kg | 18.6/3~NkW/A
CW-201ERSWS 898x817x1841 | 249kg | 37.2/3~NkW/A

CODE	DESCRIPTION	PRICE
CW-061ERSWS	Fits 6 x trays	\$14,699.00
CW-101ERSWS	Fits 10 x trays	\$18,399.00
CW-201ERSWS	Fits 20 x trays	\$36,699.00

iKore Advanced Boiler Combi Ovens



FAGOR 

Specifications:

APW-061ERLWS 898x817x846 | 126kg | 11.1/3~NkW/A
APW-101ERLWS 898x817x1841 | 148kg | 18.6/3~NkW/A
APW-201ERLWS 930x964x1841 | 306kg
APW-101GRLWS 898x817x1117 | 49kg | 0.83/10 kW/A
APW-201GRLWS 898x817x1841 | 50kg | 1.55/15 kW/A

CODE	DESCRIPTION	PRICE
APW-061ERLWS	Electric Fits 6 x trays	\$21,999.00
APW-101ERLWS	Electric Fits 10 x trays	\$29,399.00
APW-201ERLWS	Electric Fits 20 x trays	\$45,899.00
APW-101GRLWS	NG or LPG Fits 10 x trays	\$33,999.00
APW-201GRLWS	NG or LPG Fits 20 x trays	\$57,799.00

Professional Modular Combi Ovens



TECNODOM by FHE 

Specifications:

TD-6NE 840x910x830 | 91kg | 415V | 7.65kW | 3~N
TD-7NE 840x910x930 | 105kg | 415V | 7.65kW | 3~N
TD-10NE 840x910x1150 | 120kg | 415V | 7.65kW | 3~N
YXD-APE-10-SN 860x730x785

CODE	DESCRIPTION	PRICE
TD-6NE	Fits 6x 1/1GN or 600x400mm Trays	\$6,899.00
TD-7NE	Fits 7x 1/1GN or 600x400mm Trays	\$7,699.00
TD-10NE	Fits 10x 1/1GN or 600x400mm Trays	\$9,199.00
YXD-APE-10-SN	Stand	\$1,100.00

Professional Combi Oven with Auto Wash System



TECNODOM by FHE 

Specifications:

TDC-5VH 920x840x770 | 89kg | 415V | 6.45/3~NkW/A

CODE	DESCRIPTION	PRICE
TDC-5VH	Fits 5 trays	\$10,499.00



Specifications:

TDC-10VH 920x840x1170 | 130kg | 415V | 12.7/3~NkW/A

CODE	DESCRIPTION	PRICE
TDC-10VH	Fits 10 trays	\$12,599.00

TDC-VH Combi Oven Stands



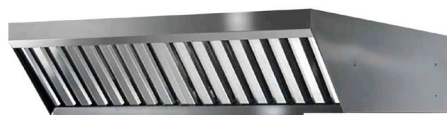
TECNODOM by FHE 

Specifications:

NEFOB 840x770x605
NEFOM 840x770x850
YXD-APE-10-SN 860x730x785

CODE	DESCRIPTION	PRICE
NEFOB	Stand with 6 pairs of runners	\$1,199.00
NEFOM	Stand with 10 pairs of runner	\$1,299.00
YXD-APE-10-SN	Compatible stand	\$1,100.00

TDC-VH Combi Steamless Canopy



TECNODOM by FHE 

Specifications:

TD-FECL 920x1005x300

CODE	DESCRIPTION	PRICE
TD-FECL	Steamless canopy with steam condenser	\$2,999.00

Compact Basket Rotisserie



Specifications:

YXD-266E 800x630x610 | 67kg | 240V | 4.8kW | 20A

CODE	DESCRIPTION	PRICE
YXD-266E	4 basket carrier Fits 8 to 12 birds	\$2,299.00

Convectmax Convection Ovens



CONVECTOMAX

Specifications:

YXD-1AE 595x530x570 | 38kg | 240V | 2.4kW | 10A

CODE	DESCRIPTION	PRICE
YXD-1AE	4x 430x315mm Trays Included	\$1,199.00

Combi, Convection, Microwave Ovens

Convectmax Convection Ovens



CONVECTMAX

Specifications:

YXD-8A-3E 834x765x500 | 50kg | 240V | 3.5kW | 15A
YXD-8AE 834x765x572 | 67kg | 240V | 6.4kW | 27A Hard Wiring
YXD-8A/15E 834x765x572 | 67kg | 240V | 3.3kW | 15A

CODE	DESCRIPTION	PRICE
YXD-8A-3E	3x 600x400mm Trays Included	\$2,699.00
YXD-8AE	Press Button Steam	\$2,999.00
YXD-8A/15E	4x 600x400mm Trays Included	\$2,999.00
	Press Button Steam	\$2,999.00
	4x 600x400mm Trays Included	\$2,999.00

Convection Ovens



CONVECTMAX

Specifications:

YXD-6A 796x670x580 | 44kg | 240V | 2.4kW | 10A
YXD-6A 796x670x580 | 44kg | 240V | 3.5kW | 15A
YXD-6A-S 615x802x800 | 19kg
YXD-4A-B 675x640x490 | 51kg | 240V | 2.67 | 15A

CODE	DESCRIPTION	PRICE
YXD-6A	Fits 4x 1/1GN Pans	\$2,699.00
YXD-6A/15	Fits 4x 1/1GN Pans	\$2,699.00
YXD-6A-S	Stand	\$579.00
YXD-4A-B	Fits 4x 430x315mm Trays	\$1,799.00

Convection Ovens



TECNODOM by FHE

Specifications:

TDE-4C 589x660x580 | 34kg | 240V | 2.35kW | 10A
TDE-4CGN 686x660x580 | 37kg | 240V | 3.1kW | 15A
TDE-3B 775x700x560 | 36kg | 240V | 3.1kW | 15A
TD-3NE 600x520x390 | 25kg | 240V | 2.8kW | 15A

CODE	DESCRIPTION	PRICE
TDE-4C	Fits 4 x 2/3 trays	\$2,399.00
TDE-4CGN	Fits 4 x GN 1/1 trays	\$2,699.00
TDE-3B	Fits 3 x 600x400 bakery trays	\$2,699.00
TD-3NE	Fits 3 x GN 2/3 trays	\$1,899.00

1000W Light Duty Commercial Microwave



Specifications:

MD-1000L 511x432x380 | 14.7kg | 240V | 1000W | 10A

CODE	DESCRIPTION	PRICE
MD-1000L	1000W Light Duty: Touch control & Electronic dial timer	\$819.00

1400W Performance Commercial Microwave



Specifications:

MD-1400L 553x488x343 | 18.4kg | 240V | 1400W | 10A

CODE	DESCRIPTION	PRICE
MD-1400	1400W Performance: Touch control & Electronic dial timer	\$1,399.00

Induction Fryer



Specifications:

IF3500S 288x478x410 | 11kg | 240V | 3.5kW | 15A

CODE	DESCRIPTION	PRICE
IF3500S	8L	\$749.00

Donut Fryer



Specifications:

EF-TE 460x620x355 | 15.8kg | 240V | 3kW | 15A

CODE	DESCRIPTION	PRICE
EF-TE	12L Oil Capacity	\$1,039.00

Chip Warmer



Specifications:

DH-310E 330x560x500 | 15kg | 240V | 1kW | 10A

CODE	DESCRIPTION	PRICE
DH-310E	1/1GN Base with Perforated fry insert	\$509.00

Electric Benchtop Fryer



Specifications:

TEF-81KW 285x440x305 | 4.8kg | 240V | 2.4kW | 10A

TEF-82KW 580x470x320 | 8kg | 240V | 2x 2.4kW | 2x 10A

CODE	DESCRIPTION	PRICE
TEF-81KW	6L Oil Capacity	\$299.00
TEF-82KW	2x 6L Oil Capacity	\$519.00

Electric Pasta Cooker



Specifications:

DF-BP 470x580x420 | 17kg | 240V | 3.5kW | 15A

CODE	DESCRIPTION	PRICE
DF-BP	10L Capacity	\$1,039.00

Induction Cooker



Specifications:

BH3500C 290x335x62 | 8kg | 240V | 3.5kW | 15A

BH3500S 290x335x62 | 8kg | 240V | 3.5kW | 15A

CODE	DESCRIPTION	PRICE
BH3500C	Temp. Range 60-240°C	\$419.00
BH3500S	Temp. Range 60-240°C German Schott Ceran glass	\$579.00

Induction Wok



Specifications:

IW350 340x430x135 | 6kg | 240V | 3.5kW | 15A

IW500 398x515x185 | 10kg | 415V | 5kW | ~NA

CODE	DESCRIPTION	PRICE
IW350	Temp. Range 60-240°C	\$749.00
IW500	Hard wiring, three phase	\$1,499.00

Wok



Specifications:

IW-Wok36 Ø 360mm diameter S/S wok | 3kg

IW-WokLid36 Ø 360mm diameter S/S wok with lid | 3.3kg

CODE	DESCRIPTION	PRICE
IW-Wok36	Induction ready wok	\$179.00
IW-WokLid36	Induction ready wok with lid	\$209.00

Tunnel Toaster



Specifications:

TT-300E 375x420x385 | 13kg | 240V | 2.2kW | 10A

CODE	DESCRIPTION	PRICE
TT-300E	Two Slice Auto Conveyor Toaster	\$1,019.00

Benchstar Benchtop Equipment



Toaster/Griller/Salamander



Specifications:

AT-936E 630x320x280 | 13.5kg | 240V | 2kW | 10A

CODE	DESCRIPTION	PRICE
AT-936E	Top Element	\$639.00

Contact Grills



Specifications:

GH-811EE 410x395x210 | 13.5kg | 240V | 2.2kW | 10A
GH-813EE 840x395x210 | 28kg | 240V | 4.4kW | 2x10A

CODE	DESCRIPTION	PRICE
GH-811EE	Single Grill	\$739.00
GH-813EE	Double Grill	\$1,139.00

Crepe Maker



Specifications:

DE-1E 450x485x242 | 23kg | 240V | 3kW | 15A

CODE	DESCRIPTION	PRICE
DE-1E	400mm Diameter Plate	\$679.00

Cast Iron Waffle Makers

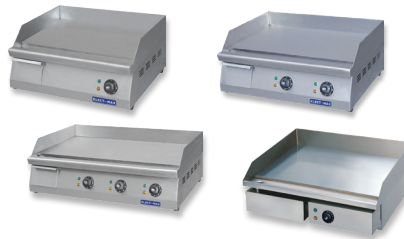


Specifications:

UWB-S 470x320x225 | 17kg | 240V | 1.5kW | 10A
WB-03D 255x440x320 | 11kg | 240V | 1kW | 10A

CODE	DESCRIPTION	PRICE
UWB-S	Single Square Plate	\$739.00
WB-03D	Single Round Plate - Rotate	\$909.00

Griddle/Hotplates



Specifications:

GH-400E 400x540x270 | 26.5kg | 240V | 3kW | 15A
GH-550E 550x540x270 | 32kg | 240V | 3kW | 15A
GH-610E 610x540x270 | 40kg | 240V | 6kW | 25A Hard Wiring
GH-760E 760x540x270 | 48kg | 415V | 9kW | 3-N
FT-818 550x450x230 | 23kg | 240V | 2.2kW | 10A

CODE	DESCRIPTION	PRICE
GH-400E	Single Control Hotplate 395x400	\$729.00
GH-550E	Single Control Hotplate 545x400	\$749.00
GH-610E	Double Control Hotplate 605x400	\$1,139.00
GH-760E	Triple Control Hotplate 755x400	\$1,399.00
FT-818	Single Control	\$559.00

Heated Pie Cabinets



Specifications:

PW-RT/380/TGE 380x465x658 | 30kg | 240V | 1.2kW | 10A
PW-RT/660/TGE 660x440x655 | 35kg | 240V | 1.84kW | 10A
PW-RT/900/1E 900x440x655 | 60kg | 240V | 1.84kW | 10A
PW-RT/1200/1E 1200x490x810 | 70kg | 240V | 3.6kW | 15A

CODE	DESCRIPTION	PRICE
PW-RT/380/TGE	2 Shelf 40 Pies	\$979.00
PW-RT/660/TGE	3 Shelf 60 Pies	\$1,099.00
PW-RT/900/1E	3 Shelf 90 Pies	\$1,149.00
PW-RT/1200/1E	3 Shelf 100 Pies	\$1,699.00

Heated Pie Cabinets



Specifications:

DH-580E 640x360x530 | 18kg | 240V | 1kW | 10A
DH-805E 865x360x620 | 36kg | 240V | 1.5kW | 10A

CODE	DESCRIPTION	PRICE
DH-580E	4 shelves 60 Pies	\$709.00
DH-805E	5 Shelves 100 Pies	\$919.00

Electric Steamer Displays



Specifications:

MME-500H-S 380x400x745 | 27kg | 240V | 0.9kW | 10A
MME-600H-S 457x518x825 | 39kg | 240V | 1.2kW | 10A

CODE	DESCRIPTION	PRICE
MME-500H-S	Electric Display Steamer	\$1,799.00
MME-600H-S	Heavy Duty Display Steamer	\$2,499.00

Warming Equipment

Benchtop Bain Marie



Specifications:
ZCK165BT-1 360x590x240 | 5kg | 240V | 1.2kW | 10A

CODE	DESCRIPTION	PRICE
ZCK165BT-1	Includes 1/1 GN x 150mm Pan & Lid	\$389.00

Mobile Heated Lowerators



Specifications:
DR-1E 450x485x920 | 31kg | 240V | 400W | 10A
DR-2E 450x910x920 | 48kg | 240V | 800W | 10A
DR-3E 405 Ø x750 | 19kg | 240V | 400W | 10A

CODE	DESCRIPTION	PRICE
DR-1E	Single Lowerator Cabinet	\$1,299.00
DR-2E	Double Lowerator Cabinet	\$2,299.00
DR-3E	Single Lowerator Insert for Bench Mounting	\$749.00

Warming & Crockery Cabinets



Specifications:
PW-SE 450x485x850 | 32kg | 240V | 750W | 10A
PW-DE 750x485x850 | 45kg | 240V | 1200W | 10A

CODE	DESCRIPTION	PRICE
PW-SE	Single Cabinet	\$919.00
PW-DE	Double Cabinet	\$1,499.00

Heated Regeneration Cabinets / Banquet Carts



Specifications:
HT-20S
 515x780x1763 | 120kg | +30 to +90°C | 240V | 800W | 10A
HT-40S
 720x900x1763 | 180kg | +30 to +90°C | 240V | 1800W | 10A

CODE	DESCRIPTION	PRICE
HT-20S	20 Pan Capacity	\$3,799.00
HT-40S	40 Pan Capacity	\$4,499.00

Beverage & Icecream

Slushy & Granita Machines



BENCHSTAR ★

Specifications:

FABIGANI-1S 270x510x810 | 31kg | 240V | 0.56kW | 10A

FABIGANI-2S 470x510x810 | 59kg | 240V | 1kW | 10A

FABIGANI-3S 670x510x810 | 78kg | 240V | 1.5kW | 10A

CODE	DESCRIPTION	PRICE
FABIGANI-1S	Single Bowl 1x 12L	\$3,399.00
FABIGANI-2S	Double Bowl 2x 12L	\$4,899.00
FABIGANI-3S	Triple Bowl 3x 12L	\$6,499.00

Refractometer



Perfect for measuring sugar content in:

- Fruit & Fruit Juices
- Wine
- Milk
- Soft Drinks
- Yeast Cultures

CODE	DESCRIPTION	PRICE
REF113	Scale Range 0-32% Brix	\$139.00

Drink Dispenser - Paddle Action



BENCHSTAR ★

Specifications:

KF12L-1 410x350x660 | 22kg | 240V | 250W | 10A

KF12L-2 470x510x810 | 59kg | 240V | 320W | 10A

KF12L-3 670x510x810 | 78kg | 240V | 380W | 10A

CODE	DESCRIPTION	PRICE
KF12L-1	Single Bowl 1x 12L	\$1,099.00
KF12L-2	Double Bowl 2x 12L	\$1,449.00
KF12L-3	Triple Bowl 3x 12L	\$1,799.00

Citrus Juicer



YASAKI ★

Specifications:

CJ-50AC 295x245x535 | 8kg | 240V | 250kW | 10A

CJ-50AH 3375x245x480 | 8.8kg | 240V | 250kW | 10A

CODE	DESCRIPTION	PRICE
CJ-50AC	1500 RPM	\$659.00
CJ-50AH	1500 RPM	\$769.00

Blenders



BENCHSTAR ★

Specifications:

KS-10000 342x290x588 | 8kg | 240V | 1.5kW | 10A

CODE	DESCRIPTION	PRICE
KS-10000	2L Digital Blender + Sound Cover	\$1,599.00
KS-10000-J	2L Spare Jug Assembly	\$459.00



BENCHSTAR ★

Specifications:

Q-8 235x270x510 | 7.5kg | 240V | 2.2kW | 10A

CODE	DESCRIPTION	PRICE
Q-8	1.8L Digital Blender + Sound Cover	\$1,799.00
Q-8-J	1.8L Spare Jug Assembly	\$459.00

Ice Shavers



YASAKI ★

Specifications:

AK1-ICS 470x305x455 | 9.8kg | 240V | 300kW | 10A

AK2-ICS 480x365x635 | 16.5kg | 240V | 300kW | 10A

CODE	DESCRIPTION	PRICE
AK1-ICS	1500 RPM	\$879.00
AK2-ICS	1500 RPM	\$1,449.00

Gelato/Ice Cream Displays



Specifications:

SD-450S 1314x694x1315 | 100kg | 240V | 325W | 10A

CODE	DESCRIPTION	PRICE
SD-450S	9x 5L Pans	\$2,749.00

Benchtop Displays



Specifications:

GN-660RT 660x530x730 | 95kg | 240V | 280W | 10A
 GN-900RT 900x530x730 | 105kg | 240V | 350W | 10A
 GN-1200RT 1200x530x730 | 135kg | 240V | 450W | 10A

CODE	DESCRIPTION	PRICE
GN-660RT	Chilled 2 Shelves + Floor	\$1,799.00
GN-900RT	Chilled 2 Shelves + Floor	\$1,999.00
GN-1200RT	Chilled 2 Shelves + Floor	\$2,249.00

Benchtop Displays



Specifications:

HTR100N 705x452x670 | 57kg | 240V | 160W | 10A
 HTR120N 705x570x670 | 64kg | 240V | 160W | 10A
 HTR160N 883x570x670 | 71kg | 240V | 200W | 10A
 HTH120N 678x568x670 | 64kg | 240V | 1100W | 10A
 HTH160N 873x570x670 | 71kg | 240V | 1100W | 10A

CODE	DESCRIPTION	PRICE
HTR100N	Chilled 2 Shelves + Floor	\$1,399.00
HTR120N	Chilled 2 Shelves + Floor	\$1,599.00
HTR160N	Chilled 2 Shelves + Floor	\$1,849.00
HTH120N	Heated 2 Shelves + Floor	\$1,499.00
HTH160N	Heated 2 Shelves + Floor	\$1,599.00

Bonvue Modern Display



Specifications:

SG090FA-2XB 900x700x1250 | 195kg | 240V | 750W | 10A
 SG120FA-2XB 1200x700x1250 | 235kg | 240V | 880W | 10A
 SG150FA-2XB 1500x700x1250 | 315kg | 240V | 970W | 10A
 SG180FA-2XB 1800x700x1250 | 405kg | 240V | 1250W | 10A
 SG200FA-2XB 2000x700x1250 | 480kg | 240V | 1360W | 10A
 SG090FE-2XB 900x700x1250 | 165kg | 240V | 1100W | 10A
 SG120FE-2XB 1200x700x1250 | 205kg | 240V | 1200W | 10A

CODE	DESCRIPTION	PRICE
SG090FA-2XB	Chilled 900mm Wide	\$5,049.00
SG120FA-2XB	Chilled 1200mm Wide	\$6,699.00
SG150FA-2XB	Chilled 1500mm Wide	\$6,599.00
SG180FA-2XB	Chilled 1800mm Wide	\$7,099.00
SG200FA-2XB	Chilled 2000mm Wide	\$8,199.00
SG090FE-2XB	Heated 900mm Wide	\$3,899.00
SG120FE-2XB	Heated 1200mm Wide	\$4,599.00

Bonvue Deluxe Display



Specifications:

SL830V 900x740x1350 | 215kg | 240V | 621W | 10A
 SL840V 1200x740x1350 | 260kg | 240V | 792W | 10A
 SL850V 1500x740x1350 | 305kg | 240V | 895W | 10A
 SL860V 1800x740x1350 | 350kg | 240V | 1056W | 10A
 SL880V 2400x740x1350 | 440kg | 240V | 1313W | 10A
 H-SL830V 900x740x1350 | 200kg | 240V | 870W | 10A
 H-SL840V 1200x740x1350 | 240kg | 240V | 975W | 10A

CODE	DESCRIPTION	PRICE
SL830V	Chilled 900mm Wide	\$5,249.00
SL840V	Chilled 1200mm Wide	\$6,249.00
SL850V	Chilled 1500mm Wide	\$7,099.00
SL860V	Chilled 1800mm Wide	\$7,799.00
SL880V	Chilled 2400mm Wide	\$10,449.00
H-SL830V	Heated 900mm Wide	\$4,249.00
H-SL840V	Heated 1200mm Wide	\$4,799.00

Heated Wet Bain Marie / Hot Food Bar Square Front



Specifications:

BM11SD 1055x630x670 | 38kg | 240V | 2318W | 9.66A
 BM14SD 1388x630x670 | 55kg | 240V | 2957W | 12.32A
 BM17SD 1721x630x670 | 80kg | 240V | 3477W | 14.49A

CODE	DESCRIPTION	PRICE
BM11SD	35-85°C	\$2,649.00
BM14SD	35-85°C	\$2,749.00
BM17SD	35-85°C	\$3,199.00
BMT11	Trolley 1060x630x750	\$419.00
BMT14	Trolley 1400x630x750	\$459.00
BMT17	Trolley 1750x630x750	\$489.00

Heated Wet Bain Marie / Hot Food Bar - Angled Front



Specifications:

BM11TD 1055x630x700 | 38kg | 240V | 2318W | 9.66A
 BM14TD 1388x630x700 | 55kg | 240V | 2957W | 12.32A
 BM17TD 1721x630x700 | 80kg | 240V | 3477W | 14.49A

CODE	DESCRIPTION	PRICE
BM11TD	35-85°C	\$2,649.00
BM14TD	35-85°C	\$2,749.00
BM17TD	35-85°C	\$3,199.00
BMT11	Trolley 1060x630x750	\$419.00
BMT14	Trolley 1400x630x750	\$459.00
BMT17	Trolley 1750x630x750	\$489.00

Saladettes / Sandwich Bar



Specifications:

XGNS1300D 1368x700x1020 | 104kg | 240V | 255W | 10A

CODE	DESCRIPTION	PRICE
XGNS1300D	3 Door Holds 8x 1/6 GN Pans	\$3,199.00

Saladettes / Sandwich Bar



Specifications:

XGNS900E 903x700x1107 | 106kg | 240V | 180W | 10A

XGNS1300E 1368x700x1107 | 166kg | 240V | 255W | 10A

CODE	DESCRIPTION	PRICE
XGNS900E	2 Door Holds 5x 1/6 GN Pans	\$2,499.00
XGNS1300E	3 Door Holds 8x 1/6 GN Pans	\$3,299.00

Pizza Make-Up Bench



Specifications:

XSS7C13S2V 1360x700x1406 | 110kg | 240V | 320W | 10A

XSS7C18S3V 1795x700x1406 | 140kg | 240V | 320W | 10A

XSS8C15S2V 1510x800x1406 | 120kg | 240V | 320W | 10A

XSS8C20S3V 2020x800x1406 | 160kg | 240V | 320W | 10A

Optional 2 and 3 drawer units available in lieu of doors

CODE	DESCRIPTION	PRICE
XSS7C13S2V	2 Door Holds 7x 1/3 GN Pans	\$3,949.00
XSS7C18S3V	3 Door Holds 8x 1/3 GN Pans	\$4,899.00
XSS8C15S2V	2 Door Holds 8x 1/3 GN Pans	\$4,249.00
XSS8C20S3V	3 Door Holds 10x 1/3 GN Pans	\$5,299.00

Flat Glass Salad Bench Tops



Specifications:

XVRX1200/380 1200x395x439 | 40.5kg | 240V | 110W | 10A

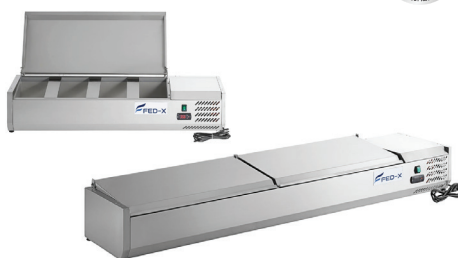
XVRX1500/380 1500x395x439 | 48kg | 240V | 110W | 10A

XVRX1800/380 1800x395x439 | 50.5kg | 240V | 110W | 10A

XVRX2000/380 2000x395x439 | 60kg | 240V | 110W | 10A

CODE	DESCRIPTION	PRICE
XVRX1200/380	Holds 4x1/3 Pans	\$1,199.00
XVRX1500/380	Holds 6x1/3 Pans	\$1,349.00
XVRX1800/380	Holds 8x1/3 Pans	\$1,499.00
XVRX2000/380	Holds 9x1/3 Pans	\$1,849.00

Flat S/S Salad Bench Tops



Specifications:

XVRX1200/380S 1200x395x281 | 40.5kg | 240V | 110W | 10A

XVRX1500/380S 1500x395x281 | 48kg | 240V | 110W | 10A

XVRX1800/380S 1800x395x281 | 50.5kg | 240V | 110W | 10A

XVRX2000/380S 2000x395x281 | 60kg | 240V | 110W | 10A

CODE	DESCRIPTION	PRICE
XVRX1200/380S	Holds 4x1/3 Pans	\$1,199.00
XVRX1500/380S	Holds 6x1/3 Pans	\$1,349.00
XVRX1800/380S	Holds 8x1/3 Pans	\$1,499.00
XVRX2000/380S	Holds 9x1/3 Pans	\$1,849.00

S/S Pizza, Salad & Sandwich Bar



Specifications: Blown Air Well

SLB120 1200x750x1080 | 109kg | 240V | 300W | 10A
SLB150 1500x760x1080 | 128kg | 240V | 390W | 10A
SLB180 1800x750x1080 | 145kg | 240V | 390W | 10A
SLB240 2400x760x1080 | 175kg | 240V | 525W | 10A

CODE	DESCRIPTION	PRICE
SLB120	2 Door Holds 6x 1/3 GN Pans	\$4,599.00
SLB150	3 Door Holds 7x 1/3 GN Pans	\$5,199.00
SLB180	3 DoorLarge Holds 9x 1/3 GN Pans	\$5,599.00
SLB240	4 DoorLarge Holds 12x 1/3 GN Pans	\$6,449.00

S/S Pizza Prep Workbench Fridges



Specifications: Blown Air Well

PWB150 1500x800x1000 | 120kg | 240V | 390W | 10A
PWB180 1800x800x1000 | 140kg | 240V | 390W | 10A
PWB200 2000x800x1000 | 165kg | 240V | 525W | 10A

CODE	DESCRIPTION	PRICE
PWB150	3 Door Holds 7x 1/3 GN Pans	\$5,199.00
PWB180	3 Door Holds 9x 1/3 GN Pans	\$5,499.00
PWB200	3 Door Holds 10x 1/3 GN Pans	\$6,049.00

Service Oriented Pizza & Salad Bars



Specifications:

TPB1200 1203x820x1050 | 140kg | 240V | 450W | 10A
TPB1800 1798x820x1050 | 185kg | 240V | 500W | 10A
TPB2400 2393x820x1050 | 242kg | 240V | 835W | 10A

CODE	DESCRIPTION	PRICE
TPB1200	1 Door Holds 6x 1/3 GN Pans	\$4,699.00
TPB1800	2 Door Holds 9x 1/3 GN Pans	\$6,499.00
TPB2400	3 Door Holds 12x 1/3 GN Pans	\$8,749.00

S/S Pizza, Sandwich & Salad Prep Bench



Specifications:

TSB735 735x760x1098 | 95kg | 240V | 480W | 10A
TSB1555 1555x760x1098 | 159kg | 240V | 750W | 10A

CODE	DESCRIPTION	PRICE
TSB735	1 Door Holds 8x 1/6 GN Pans	\$2,899.00
TSB1555	2 Door Holds 16x 1/6 GN Pans	\$4,199.00

Premium S/S Bain Maries



Specifications:

PG150FE-YG 1460x790x1250 | 125kg | 240V | 1.8kW | 10A
PG180FE-YG 1800x790x1250 | 150kg | 240V | 2.5kW | 15A
PG210FE-YG 2140x790x1250 | 175kg | 240V | 2.65kW | 15A

CODE	DESCRIPTION	PRICE
PG150FE-YG	2 Door Holds 4x 1/1 GN Pans	\$5,249.00
PG180FE-YG	2 Door Holds 5x 1/1 GN Pans	\$5,799.00
PG210FE-YG	2 Door Holds 6x 1/1 GN Pans	\$6,799.00

Premium S/S Cold Salad & Noodle Bars



Specifications: Blown Air Well

PG150FA-YG 1460x790x1250 | 164kg | 240V | 716W | 10A
PG180FA-YG 1800x790x1250 | 187kg | 240V | 716W | 10A
PG210FA-YG 2140x790x1250 | 217kg | 240V | 716W | 10A

CODE	DESCRIPTION	PRICE
PG150FA-YG	2 Door Holds 4x 1/1 GN Pans	\$8,749.00
PG180FA-YG	2 Door Holds 5x 1/1 GN Pans	\$10,199.00
PG210FA-YG	3 Door Holds 6x 1/1 GN Pans	\$11,749.00

Upright Glass Door Beverage Fridge



Specifications:

TCBD78W 428x386x1000 | 39kg | 240V | 184W | 10A
TCBD78B 428x386x1000 | 39kg | 240V | 184W | 10A
TCBD108L 447x400x1194 | 44kg | 240V | 260W | 10A

CODE	DESCRIPTION	PRICE
TCBD78W	78L White	\$1,099.00
TCBD78B	78L Black	\$1,099.00
TCBD108L	108L White	\$1,599.00

Upright Glass Door Beverage Fridges



Specifications:

LG-370P 610x610x1973 | 72kg | 240V | 285W | 10A
LG-540P | **LG-540BP** 700x690x2079 | 83kg | 240V | 335W | 10A
LG-730P 1120x610x1973 | 110kg | 240V | 400W | 10A

CODE	DESCRIPTION	PRICE
LG-370P	370L White	\$1,999.00
LG-540P	540L White	\$2,449.00
LG-540BP	540L Black	\$2,449.00
LG-730P	730L White	\$2,949.00



Specifications:

LG-1000P 1110x690x2079 | 125kg | 240V | 580W | 10A
LG-1000BP 1110x690x2079 | 125kg | 240V | 580W | 10A
LG-1000SDBP 1110x690x2079 | 125kg | 240V | 580W | 10A

CODE	DESCRIPTION	PRICE
LG-1000P	1000L White	\$3,299.00
LG-1000BP	1000L Black	\$3,299.00
LG-1000SDBP	1000L Sliding Door	\$3,549.00

Upright Glass Door Beverage Fridges



Specifications:

LG-1200P 1330x690x2079 | 130kg | 240V | 1020W | 10A
LG-1203P 1600x600x1975 | 157kg | 240V | 970W | 10A

CODE	DESCRIPTION	PRICE
LG-1200P	1200L	\$3,949.00
LG-1203P	1200L	\$4,849.00

Upright Glass Door Freezer



Specifications:

LG-400PF 670x693x2008 | 110kg | 240V | 1500W | 10A
LG-800PF 1220x693x2008 | 189kg | 240V | 2500W | 10A

CODE	DESCRIPTION	PRICE
LG-400PF	400L	\$4,399.00
LG-800PF	800L	\$6,599.00

Glass Door Supermarket Fridges & Freezers



Specifications:

LG-1000GBMF 1253x760x1997 | 240kg | 240V | 1517W | 10A
LG-1500GBM 1880x710x2003 | 207.5kg | 240V | 559W | 10A
LG-1500GBMF 1880x760x1997 | 305kg | 240V | 2600W | 15A

CODE	DESCRIPTION	PRICE
LG-1000GBMF	Black Double Door Freezer 960L	\$8,799.00
LG-1500GBM	Black Triple Door Fridge 1530L	\$7,299.00
LG-1500GBMF	Black Triple Door Freezer 1480L	\$12,099.00

S/S Solid Door Upright Fridge & Freezers



Specifications:

HR200 S/S | **HF200 S/S**
 600x600x855 | 44kg/44.5kg | 240V | 150W | 10A
HR400 S/S | **HF400 S/S**
 600x600x1850 | 74kg/79kg | 240V | 500W | 10A
HR600 S/S | **HF600 S/S**
 777x695x1895 | 97kg/101kg | 240V | 520W | 10A

CODE	DESCRIPTION	PRICE
HR200 S/S	Fridge 129L	\$1,099.00
HR400 S/S	Fridge 361L	\$1,699.00
HR600 S/S	Fridge 620L	\$1,999.00
HF200 S/S	Freezer 129L	\$1,199.00
HF400 S/S	Freezer 361L	\$1,799.00
HF600 S/S	Freezer 620L	\$2,499.00



Specifications:

HR200G S/S | **HF200G S/S**
 600x600x855 | 44kg/44.5kg | 240V | 150W | 10A
HR400G S/S | **HF400G S/S**
 600x600x1850 | 69kg/76kg | 240V | 500W | 10A
HR600G S/S | **HF600G S/S**
 777x695x1895 | 90kg/94kg | 240V | 520W | 10A

CODE	DESCRIPTION	PRICE
HR200G S/S	Fridge 129L	\$1,399.00
HR400G S/S	Fridge 361L	\$2,130.00
HR600G S/S	Fridge 620L	\$2,799.00
HF200G S/S	Freezer 129L	\$2,099.00
HF400G S/S	Freezer 361L	\$2,999.00
HF600G S/S	Freezer 620L	\$3,699.00

Solid Door Upright Fridges & Freezers



Specifications:

XURC400SFV 680x710+30x2000 | 102kg | 240V | 195W | 10A
 XURF400SFV 680x710+30x2000 | 111kg | 240V | 450W | 10A
 XURC600SFV 680x810+30x2000 | 110kg | 240V | 210W | 10A
 XURF600SFV 680x810+30x2000 | 117kg | 240V | 465W | 10A
 XURC1200SFV 1340x810+30x2000 | 167kg | 240V | 430W | 10A
 XURF1200SFV 1340x810+30x2000 | 177kg | 240V | 730W | 10A

CODE	DESCRIPTION	PRICE
XURC400SFV	429L Single Door Fridge	\$2,749.00
XURF400SFV	429L Single Door Freezer	\$3,199.00
XURC600SFV	600L Single Door Fridge	\$3,299.00
XURF600SFV	600L Single Door Freezer	\$3,549.00
XURC1200SFV	1200L Double Door Fridge	\$4,299.00
XURF1200SFV	1200L Double Door Freezer	\$4,749.00

S/S Split Door Upright Fridges & Freezers



Specifications:

XURC600S1V 680x810+30x2000 | 110kg | 240V | 210W | 10A
 XURC1200S2V 1340x810+30x2000 | 167kg | 240V | 430W | 10A

CODE	DESCRIPTION	PRICE
XURC600S1V	Split 2 Door Fridge	\$3,299.00
XURC1200S2V	Split 4 Door Fridge	\$4,299.00

Glass Door Upright Fridges & Freezers



Specifications:

XURC600G1V 680x810+30x2000 | 132kg | 240V | 195W | 10A
 XURF600G1V 680x810+30x2000 | 132kg | 240V | 450W | 10A
 XURC1200G2V 1340x810+30x2000 | 167kg | 240V | 400W | 10A
 XURF1200G2V 1340x810+30x2000 | 167kg | 240V | 700W | 10A

CODE	DESCRIPTION	PRICE
XURC600G1V	Fridge 600L	\$3,149.00
XURF600G1V	Freezer 600L	\$3,849.00
XURC1200G2V	Fridge 1200L	\$4,749.00
XURF1200G2V	Freezer 1200L	\$5,949.00

304 S/S Bar Fridges with Splashback



Specifications:

CM20G 2005x600x1030+50 | 150kg | 240V | 350W | 10A
 CM25G 2505x600x1030+50 | 180kg | 240V | 350W | 10A

CODE	DESCRIPTION	PRICE
CM20G	3 Door 523.4L	\$5,199.00
CM25G	4 Door 720.8L	\$5,849.00

Undercounter Solid Door Fridges/Freezers



Specifications:

XUB7C13S2V 1360x700x850 | 102kg | 240V | 230W | 10A
 XUB7C18S3V 1795x700x850 | 121kg | 240V | 235W | 10A
 XUB7C22S4V 2230x700x850 | 150kg | 240V | 335W | 10A
 XUB7F13S2V 1360x700x850 | 107kg | 240V | 600W | 10A
 XUB7F18S3V 1795x700x850 | 146kg | 240V | 650W | 10A

CODE	DESCRIPTION	PRICE
XUB7C13S2V	2 Door Fridge	\$2,849.00
XUB7C18S3V	3 Door Fridge	\$3,199.00
XUB7C22S4V	4 Door Fridge	\$3,949.00
XUB7F13S2V	2 Door Freezer	\$3,349.00
XUB7F18S3V	3 Door Freezer	\$3,749.00

Undercounter Solid Door Fridges/Freezers



Specifications:

XUB6C13S2V 1360x600x850 | 102kg | 240V | 230W | 10A
 XUB6C18S3V 1795x600x850 | 121kg | 240V | 235W | 10A
 XUB6C22S4V 2230x600x850 | 150kg | 240V | 335W | 10A
 XUB6F13S2V 1360x600x850 | 107kg | 240V | 600W | 10A
 XUB6F18S3V 1795x600x850 | 146kg | 240V | 650W | 10A

CODE	DESCRIPTION	PRICE
XUB6C13S2V	2 Door Fridge	\$2,749.00
XUB6C18S3V	3 Door Fridge	\$3,099.00
XUB6C22S4V	4 Door Fridge	\$3,599.00
XUB6F13S2V	2 Door Freezer	\$3,349.00
XUB6F18S3V	3 Door Freezer	\$3,749.00

Undercounter Glass Door Fridges/Freezers



Specifications:

XUB7C13G2V 1360x700x850 | 108kg | 240V | 230W | 10A
 XUB7C18G3V 1795x700x850 | 134kg | 240V | 235W | 10A
 XUB7C22G4V 2230x700x850 | 158kg | 240V | 335W | 10A

CODE	DESCRIPTION	PRICE
XUB7C13G2V	2 Door Fridge	\$3,199.00
XUB7C18G3V	3 Door Fridge	\$3,549.00
XUB7C22G4V	4 Door Fridge	\$4,549.00

Compact Workbench Fridges



Specifications:

XGNS900B 903x700x897 | 81kg | 240V | 180W | 10A
 XGNS1300B 1368x700x897 | 104kg | 240V | 255W | 10A

CODE	DESCRIPTION	PRICE
XGNS900B	2 Door 240L	\$1,799.00
XGNS1300B	3 Door 368L	\$2,499.00

Refrigeration

FED-X Work Bench Accessories

CODE	DESCRIPTION	PRICE
XUB62-WBB	Splashback top for 2 door 600mm deep under counter unit, suits XUB6C13S2V & XUB6F13S2V	\$299.00
XUB63-WBB	Splashback top for 3 door 600mm deep under counter unit, suits XUB6C18S3V & XUB6F18S3V	\$379.00
XUB64-WBB	Splashback top for 4 door 600mm deep under counter unit, suits XUB6C22S4V	\$429.00
XUB72-WBB	Splashback top for 2 door 700mm deep under counter unit, suits XUB7C13S2V, XUB7C13G2V & XUB7F13S2V	\$309.00
XUB73-WBB	Splashback top for 3 door 700mm deep under counter unit, suits XUB7C18S3V, XUB7C18G3V & XUB7F18S3V	\$399.00
XUB73-WBB	Splashback top for 4 door 700mm deep under counter unit, suits XUB7C22S4V & XUB7C22G4V	\$459.00
XUB-2DRAWER	1/2 Drawer x 2 with Fullerer heavy duty runner	\$659.00
XUB-3DRAWER	1/3 Drawer x 3 with Fullerer heavy duty runner	\$1009.00



Black Magic Bar Coolers



thermaster

Specifications:

LG-208SC 900x530x835 | 75kg | 240V | 280W | 10A
 LG-330SC 1350x530x835 | 92kg | 240V | 315W | 10A
 LG-138HC 600x530x835 | 52kg | 240V | 160W | 10A
 LG-208HC 900x530x835 | 75kg | 240V | 280W | 10A
 LG-330HC 1350x530x835 | 92kg | 240V | 315W | 10A

CODE	DESCRIPTION	PRICE
LG-208SC	2 Sliding Glass Doors 208L	\$1,349.00
LG-330SC	3 Sliding Glass Doors 330L	\$1,999.00
LG-138HC	1 Glass Door 138L	\$1,099.00
LG-208HC	2 Glass Doors 208L	\$1,299.00
LG-330HC	3 Glass Doors 330L	\$1,999.00

Black Magic Bar Coolers



thermaster

Specifications:

BC3100G 2002x513x885 | 125kg | 240V | 280W | 10A
 BC4100G 2542x513x885 | 150kg | 240V | 440W | 10A

CODE	DESCRIPTION	PRICE
BC3100G	3 Glass Doors 536.8L	\$4,499.00
BC4100G	4 Glass Doors 698.3L	\$5,249.00

Bar Fridge & Freezer Matching Freezer



Specifications:

DC-122Q 524x532x831 | 25kg | 240V | 100W | 10A
 DC-80F 545x583x850 | 29kg | 240V | 100W | 10A

CODE	DESCRIPTION	PRICE
DC-122Q	Fridge/Freezer 123L	\$589.00
DC-80F	Freezer 83L	\$639.00

Premium Wine Coolers



Specifications:

WB-51A 595x572x820 | 49kg | 240V | 120W | 10A
 WB-166A 598x690x1600 | 82kg | 240V | 680W | 10A
 WB-155B 598x690x1600 | 82kg | 240V | 680W | 10A

CODE	DESCRIPTION	PRICE
WB-51A	Single Zone Holds 51 Bottles	\$1,649.00
WB-166A	Single Zone Holds 166 Bottles	\$2,699.00
WB-155B	Dual Zone Holds 155 Bottles	\$2,849.00

Meat Dry Aging Cabinets



thermaster

Specifications:

RK400G 700x730x1650 | 102kg | 240V | 160W | 10A

CODE	DESCRIPTION	PRICE
RK400G	1 Door 400 Litre	\$9,899.00

Supermarket Combined Freezer



Specifications:

ZCD-TD125 - Top 1250x590x1022 | 122kg | 240V | 550W | 10A
 ZCD-TD125 - Btm 1252x836x870+210 | 111kg | 240V | 320W | 10A
 ZCD-TD145 - Top 1450x590x1022 | 122kg | 240V | 741W | 10A
 ZCD-TD145 - Btm 1454x850x870+210 | 121kg | 240V | 727W | 10A
 ZCD-TD210 - Top 2104x590x1022 | 188kg | 240V | 920W | 15A
 ZCD-TD210 - Btm 2104x850x870+210 | 158kg | 240V | 721W | 10A

CODE	DESCRIPTION	PRICE
ZCD-TD125	2 Door	\$8,799.00
ZCD-TD145	2 Door	\$10,899.00
ZCD-TD210	3 Door	\$13,199.00

Refrigeration

Supermarket Island Freezer



thermaster

Specifications:

ZCD-L145G 1454x850x870 | 101kg | 240V | 727W | 10A
ZCD-E185G 1850x850x870 | 129kg | 240V | 562W | 10A
ZCD-L210G 2104x850x870 | 136kg | 240V | 721W | 10A
ZCD-L250G 2500x850x870 | 153kg | 240V | 960W | 10A

CODE	DESCRIPTION	PRICE
ZCD-L145G	2 Door 2 Shelves	\$5,749.00
ZCD-E185G	2 Door 3 Shelves	\$6,599.00
ZCD-L210G	2 Door 4 Shelves	\$6,599.00
ZCD-L250G	3 Door 5 Shelves	\$7,249.00

Heavy Duty Supermarket Glass Sliding Lid Freezers



thermaster

Specifications:

ST445 1530x680x850 | 77kg | 240V | 340W | 10A
ST545 1810x680x850 | 86kg | 240V | 340W | 10A

CODE	DESCRIPTION	PRICE
ST445	445L	\$2,199.00
ST545	545L	\$2,699.00
ST545-BASKET	For ST445 & ST545	\$39.00

Heavy Duty Chest Freezers with S/S Lids



thermaster

Specifications:

BD466F 1483x701x920 | 66kg | 240V | 250W | 10A
BD598F 1603x733x1024 | 85kg | 240V | 280W | 10A
BD768F 1850x815x1000 | 97kg | 240V | 300W | 10A

CODE	DESCRIPTION	PRICE
BD466F	466L Includes 1 Basket	\$1,899.00
BD598F	598L Includes 2 Basket	\$2,449.00
BD768F	768L Includes 2 Basket	\$2,999.00
BD466F-BASKET	Extra Basket 260x506x260	\$49.00
BD598F-BASKET	Extra Basket 260x575x260	\$49.00
BD768F-BASKET	Extra Basket 260x624x260	\$59.00

Ice Crusher & Ice Shavers



YASAKI

Specifications:

IC200-3L 338x199x524 | 5.4kg | 220V | 0.2kW | 10A
AK1-ICS 470x305x455 | 938kg | 240V | 300W | 10A
AK2-ICS 480x365x635 | 16.5kg | 240V | 300W | 10A

CODE	DESCRIPTION	PRICE
IC200-3L	3L Capacity	\$879.00
AK1-ICS	Ø110mm Ice feed inlet	\$879.00
AK2-ICS	Ø110mm Ice feed inlet	\$1,449.00

Blizzard Under Bench Ice Makers



Specifications:

Bullet Ice
SN-25C 375x575x762 | 35kg | 240V | 300W | 10A
Cube Ice
SN-31A 460x430x796 | 38kg | 240V | 270W | 10A
SN-80P 500x448x796 | 40kg | 240V | 360W | 10A

CODE	DESCRIPTION	PRICE
SN-25C	Output 25kg/24hrs Storage 15kg	\$1,599.00
SN-31A	Output 31kg/24hrs Storage 10kg	\$2,099.00
SN-80P	Output 36kg/24hrs Storage 15kg	\$2,149.00

Blizzard Under Bench Ice Makers



Specifications:

Cube Ice
SN-120P 500x590x850 | 50kg | 240V | 360W | 10A
SN-81B 660x635x775 | 62kg | 240V | 563W | 10A
SN-101B 660x635x775 | 62kg | 240V | 580W | 10A
SN-210P 660x685x920 | 66kg | 240V | 580W | 10A

CODE	DESCRIPTION	PRICE
SN-120P	Output 55kg/24hrs Storage 10kg	\$2,649.00
SN-81B	Output 80kg/24hrs Storage 19kg	\$3,549.00
SN-101B	Output 100kg/24hrs Storage 14kg	\$4,399.00
SN-210P	Output 95kg/24hrs Storage 36kg	\$3,299.00

Blizzard Professional Ice Makers



Specifications:

Cube Ice
SN-420P 560x830x1718 | 96kg | 240V | 1100W | 10A
SN-500P 760x830x1718 | 120kg | 240V | 1240W | 10A
SN-700P 760x830x1893 | 122kg | 240V | 1460W | 10A
SN-1000P 760x830x1893 | 126kg | 240V | 2300W | 10A

CODE	DESCRIPTION	PRICE
SN-420P	Output 189kg/24hrs Storage 110kg	\$5,499.00
SN-500P	Output 225kg/24hrs Storage 170kg	\$6,599.00
SN-700P	Output 315kg/24hrs Storage 170kg	\$7,149.00
SN-1000P	Output 455kg/24hrs Storage 170kg	\$8,149.00

Blizzard Professional Ice Makers



Specifications:

Cube Ice
SN-1500P 1227x973x1928 | 220kg | 240V | 2860W | 15A
SN-2000P 1227x973x2058 | 270kg | 240V | 3800W | 3~N

CODE	DESCRIPTION	PRICE
SN-1500P	Output 680kg/24hrs Storage 350kg	\$10,999.00
SN-2000P	Output 900kg/24hrs Storage 350kg	\$15,399.00

Blizzard Professional Ice Makers



Specifications:

Crescent Ice
SN-80C 650x640x1050 | 61kg | 240V | 830W | 10A
SN-145C 560x830x1900 | 80kg | 240V | 900W | 10A
SN-280C 560x830x1900 | 86kg | 240V | 1300W | 10A

CODE	DESCRIPTION	PRICE
SN-80C	Output 80kg/24hrs Storage 30kg	\$4,949.00
SN-145C	Output 145kg/24hrs Storage 125kg	\$5,849.00
SN-280C	Output 280kg/24hrs Storage 125kg	\$9,899.00

Refrigeration

Granular Ice Makers



Specifications:

Granular Ice

SN-068F 520x560x955 | 46kg | 240V | 300W | 10A
 SN-128F 650x660x1050 | 50kg | 240V | 600W | 10A
 SN-258F 560x830x1760 | 105kg | 240V | 1000W | 10A

CODE	DESCRIPTION	PRICE
SN-068F	Output 60kg/24hrs Storage 320kg	\$5,149.00
SN-128F	Output 120kg/24hrs Storage 50kg	\$6,449.00
SN-258F	Output 250kg/24hrs Storage 105kg	\$10,999.00

Chewblet / Nugget Ice Machine



Specifications:

Chewblet Ice

SN-258N 560x830x1760 | 160kg | 240V | 1160W

CODE	DESCRIPTION	PRICE
SN-258N	Output 250kg/24hrs Storage 125kg	\$10,999.00

Ice Dispenser



Specifications:

SD-130B 560x855x1360 | 78kg | 240V | 210W

CODE	DESCRIPTION	PRICE
SD-130B	Output 7,200kg/24hrs Storage 60kg	\$6,049.00

Blast Chillers & Shock Freezers



Specifications:

DO3 750x740x750 | 30kg | 240V | 703W | 10A
 DO5 750x740x880 | 51kg | 240V | 801W | 10A
 DO10 750x740x1290 | 150kg | 240V | 1298W | 10A



CODE	DESCRIPTION	PRICE
DO3	Holds 3x 1/1 GN or 600x400mm Pans	\$5,299.00
DO5	Holds 5x 1/1 GN or 600x400mm Pans	\$6,349.00
DO10	Holds 10x 1/1 GN or 600x400mm Pans	\$9,699.00

Dishwashers

Underbench Glass / Dishwasher



Specifications:
CO-402BDD 470x520x720 | 36kg | 240V | 3.06kW | 15A

CODE	INCLUDES	PRICE
CO-402BDD	1x 400x400 Basket + 1x Cutlery Container	\$4,799.00

Underbench Glass / Dishwasher



Specifications:
CO-502BDD 600x610x830 | 60kg | 240V | 3.06kW | 15A
| 240V | 4.3kW | 18A
| 240V | 6.2kW | 27A
| 415V | 10.7kW | 3~N

CODE	INCLUDES	PRICE
CO-502BDD	1x 500x500 Basket 1x Utility Basket 2x Cutlery Container	\$6,399.00

Underbench Glass / Dishwasher



Specifications:
UCD-400 460x560x745 | 52.25kg | 240V | 2.65kW | 15A
UCD-400D 460x560x745 | 54.5kg | 240V | 2.65kW | 15A

CODE	INCLUDES	PRICE
UCD-400	1x 400x400 Glass Basket	\$3,699.00
UCD-400D	Double Skin Door & Wall 1x 400x400 Glass Basket	\$3,999.00

Underbench Glass / Dishwasher



Specifications:
UCD-500 573x607x800-815 | 67.5kg | 240V | 3kW | 15A

Includes 1x 500x500 Plate Basket; 2x Cutlery Baskets & 1x Utility Basket

CODE	DESCRIPTION	PRICE
UCD-500	Double Skin Door	\$4,799.00

Pass-Through Dishwasher



Specifications:
CO-142BDD 630x750x1465 | 92kg | 415V | 11.1kW | 3~N | Multipower

CODE	INCLUDES	PRICE
CO-142BDD	1x Base Basket 1x Plate Basket 2x Cutlery Container	\$8,499.00

Pass-Through Dishwasher with Heat Recovery



Specifications:
CO-142BDDHRS 630x750x1920 | 126kg | 415V | 11.1kW | 3~N | Multipower

CODE	INCLUDES	PRICE
CO-142BDDHRS	1x Base Basket 1x Plate Basket 2x Cutlery Container	\$12,699.00

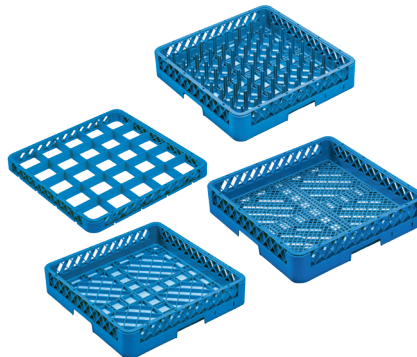
Pass-Through Dishwasher with Heat Recovery



Specifications:
PTD-601D 710x790x1430 | 104kg | 415V | 15.71kW | 3~N

CODE	INCLUDES	PRICE
PTD-601D	1x Dish Rack 1x Utility Basket 2x Cutlery Baskets	\$7,299.00

Dishwasher Racks



CODE	INCLUDES	PRICE
JW-252	25 Compartment Dropped Extender 500x500x70	\$29.00
JW-B64B	64 Compartment Plate & Tray Rack 500x500x100	\$49.00
JW-NS	Open Cup Rack 500x500x100	\$49.00
JW-NC	Cutlery Rack 500x500x100	\$49.00

Bakery + Pizza

Benchtop Mixer



BakerMAX

Specifications:
B7B 429x240x425 | 18kg | 240V | 280W | 10A

CODE	DESCRIPTION	PRICE
B7B	7L Includes Hook, Beater & Whisk attachments	\$1,199.00

Planetary Mixers 3 Speed



BakerMAX

Specifications:
B10KG 370x435x630 | 73kg | 240V | 860W | 10A
B20KG 440x530x780 | 88kg | 240V | 1100W | 10A
B40KG 530x640x1000 | 130kg | 240V | 1500W | 10A
All Models Include Hook, Beater & Whisk attachments

CODE	DESCRIPTION	PRICE
B10KG	10L Max dry ingredients 2kg	\$1,599.00
B20KG	20L Max dry ingredients 4.5kg	\$1,999.00
B40KG	40L Max dry ingredients 7.5kg	\$4,399.00

Heavy Duty Planetary Mixers - 3 Speed



BakerMAX

Specifications:
B10GC 433x459x624 | 45kg | 240V | 0.6kW | 10A
B20GC 508x537x806 | 65kg | 240V | 1.1kW | 10A
B40CP 725x702x1190 | 170kg | 240V | 2.1kW | 10A

CODE	DESCRIPTION	PRICE
B10GC	10L Max dry ingredients 2.5kg	\$2,199.00
B20GC	20L Max dry ingredients 5kg	\$2,899.00
B40CP	40L Max dry ingredients 9kg	\$5,749.00

Heavy-Duty Professional Spiral Mixers



Specifications:

FS20M	390x730x900 90kg 240V 1.5kW 10A	
FS30M	425x750x1000 90kg 240V 1.5kW 10A	
FS40M	480x840x1000 155kg 240V 3kW 15A	
FS50M	480x840x1000 170kg 240V 3kW 15A	
FS60M	480x840x1000 180kg 240V 3kW 15A	
FS100M	650x1080x1380 340kg 415V 5kW 3~N	
FS130M	730x1160x1380 370kg 415V 5.5kW 3~N	
FS200M	840x1380x1560 410kg 415V 7.5kW 3~N	FS20/30/40/50/60M
CODE	DESCRIPTION	PRICE
FS20M	21L Max dry ingredients 8kg	\$2,099.00
FS30M	35L Max dry ingredients 12kg	\$2,949.00
FS40M	40L Max dry ingredients 16kg	\$4,049.00
FS50M	54L Max dry ingredients 20kg	\$4,399.00
FS60M	64L Max dry ingredients 25kg	\$5,299.00
FS100M	100L Max dry ingredients 40kg	\$14,299.00
FS130M	130L Max dry ingredients 50kg	\$16,499.00
FS200M	200L Max dry ingredients 75kg	\$21,999.00



Black Panther Deck Ovens



BakerMAX

Specifications:
EP-1-1-SDE 1190x710x430 | 95kg | 415V | 7.2kW | 3~N
EP-1-SDE 1190x710x750 | 120kg | 415V | 14.4kW | 3~N
EP-2-1E 910x820x430 | 68kg | 415V | 4.2kW | 3~N
EP-2-E 910x820x750 | 118kg | 415V | 8.4kW | 3~N

CODE	DESCRIPTION	PRICE
EP-1-1-SDE	Wide Series Single Deck	\$2,299.00
EP-1-SDE	Wide Series Double Deck	\$3,749.00
EP-2-1E	Standard Series Single Deck	\$2,149.00
EP-2-E	Standard Series Double Deck	\$3,699.00
EP-1-1-SD-S	Stand 1190x710x960 33kg	\$1,019.00
EP-1-SD-S	Stand 1190x710x860 33kg	\$1,019.00
EP-2-1-S	Stand 890x710x960 24kg	\$969.00
EP-2-S	Stand 890x710x860 24kg	\$969.00

Prisma Food Deck Ovens



BakerMAX

Specifications:
TP-2-1 1100x1074x413 | 103.5kg | 415V | 6.9kW | 3~N
TP-2-1-SD 1100x1314x413 | 149.5kg | 415V | 10.2kW | 3~N
TP-2 1100x1074x745 | 164kg | 415V | 13.8kW | 3~N
TP-2-SD 1100x1314x745 | 220kg | 415V | 20.4kW | 3~N

CODE	DESCRIPTION	PRICE
TP-2-1	Single Deck	\$3,799.00
TP-2-1-SD	Single Deck	\$4,499.00
TP-2	Double Deck	\$6,599.00
TP-2-SD	Double Deck	\$6,999.00
TP-2-1-S	Stand 1111x975x960 70kg	\$799.00
TP-2-1-SD-S	Stand 1113x1219x960 70kg	\$1,019.00
TP-2-S	Stand 1111x975x860 70kg	\$799.00
TP-2-SD-S	Stand 1113x1219x860 70kg	\$1,019.00

Prisma Food Proving Chamber



MADE IN ITALY

BakerMAX

Specifications:
TP4-44 1100x964x900 | 82kg | 240V | 2kW | 10A

CODE	DESCRIPTION	PRICE
TP4-44	0-60°C 12 Trays	\$4,649.00

Prisma Food S/S Hood



MADE IN ITALY

BakerMAX

Specifications:
KT4-44 1100x1115x120 | 14kg | 60W | 240V | 10A

CODE	DESCRIPTION	PRICE
KT4-44MS	S/S hood with motor & speed regulator	\$1,799.00

Dough Rollers



MADE IN ITALY

BakerMAX

Specifications: On/Off foot pedal included
DMA310-1 480x335x430 | 18kg | 240V | 250W | 10A
DSA420RP 540x410x680 | 38kg | 240V | 250W | 10A
DSA500RP 635x410x680 | 41kg | 240V | 250W | 10A

CODE	DESCRIPTION	PRICE
DMA310-1	Pizza Base 45cm	\$1,749.00
DSA420RP	Pizza Base 40cm	\$2,799.00
DSA500RP	Pizza Base 45cm	\$3,299.00

Touch and Go
Dough Roller



Specifications: On/off foot pedal included

DSAT420 585x435x835 | 36kg | 240V | 250W | 10A

CODE	DESCRIPTION	PRICE
DSAT420	Pizza base 26-40cm	\$2,949.00

Automatic Dough
Divider & Rounder



Specifications:

PF-PO300 510x530x830 | 74kg | 415V | 930W | 3~N

Work Station Included with PF-PO300 660x880x960 | 29kg

AR300P 510x510x750 | 48kg | 415V | 300W | 3~N

CODE	DESCRIPTION	PRICE
PF-PO300	Dough Divider 30kg Hopper	\$18,499.00
AR300P	Dough Rounder 50 to 300g	\$10,549.00

Pizza Shaping Machine



Specifications:

PRA33 470x590x830 | 96kg | 415V | 4750W | 3~N

CODE	DESCRIPTION	PRICE
PRA33	Forming Pizza Base Size up to 12 inch	\$10,299.00

Food Prep + Butcher

Compact Stick Blender



Specifications:

MS200 200mm | 1.45kg | 240V | 250W | 10A
MS250W 250mm | 1.45kg | 240V | 250W | 10A
MS650057 400mm | 2kg

CODE	DESCRIPTION	PRICE
MS200	200mm Tube length	\$769.00
MS250W	250mm Tube Length	\$929.00
MS650057	Whisk Attachment	\$759.00

Stick Blenders



Specifications: Variable Speed

BM435 350mm | 3.25kg | 240V | 450W | 10A
BM545 450mm | 3.5kg | 240V | 450W | 10A
BM755 550mm | 3.5kg | 240V | 450W | 10A
BM765 650mm | 3.7kg | 240V | 450W | 10A
BM653578 400mm | 2kg

CODE	DESCRIPTION	PRICE
BM435	350mm Tube length	\$1,349.00
BM545	450mm Tube Length	\$1,399.00
BM755	550mm Tube Length	\$1,449.00
BM765	650mm Tube Length	\$1,649.00
BM653578	Whisk Attachment	\$649.00

Prep4You Vegetable Slicer



Specifications:

P4U-CS 348x315x527 | 14kg | 500W | 10A
P4U-CV 348x315x527 | 15kg | 750W | 10A

CODE	DESCRIPTION	PRICE
P4U-CS	1 Speed 1500RPM	\$2,999.00
P4U-CV	9 Speed Variable 500-1200RPM	\$4,299.00

Prep4You Cutter / Mixer / Food Processor



Specifications:

P4U-PS2 247x328x456 | 13kg | 500W | 10A
P4U-PS2S 247x328x456 | 13kg | 500W | 10A
P4U-PS3S 252x334x476 | 14kg | 500W | 10A
P4U-PV2 247x328x456 | 14kg | 750W | 10A
P4U-PV2S 247x328x456 | 14kg | 750W | 10A
P4U-PV3S 252x334x476 | 14.5kg | 750W | 10A

CODE	DESCRIPTION	PRICE
P4U-PS2	1 Speed 1500RPM	\$2,649.00
P4U-PS2S	1 Speed 1500RPM	\$2,999.00
P4U-PS3S	1 Speed 1500RPM	\$3,099.00
P4U-PV2	9 Speed Variable 500-3600RPM	\$3,849.00
P4U-PV2S	9 Speed Variable 500-3600RPM	\$4,299.00
P4U-PV3S	9 Speed Variable 500-3600RPM	\$4,399.00



Prep4You Combination Slicer / Cutter



Specifications:

P4U-PS201 247x328x456 | 13kg | 500W | 10A
P4U-PS201S 247x328x456 | 13kg | 500W | 10A
P4U-PS301S 252x334x476 | 14kg | 500W | 10A
P4U-PV201 247x328x456 | 14kg | 750W | 10A
P4U-PV201S 247x328x456 | 14kg | 750W | 10A
P4U-PV301S 252x334x476 | 14.5kg | 750W | 10A

CODE	DESCRIPTION	PRICE
P4U-PS201	1 Speed 1500RPM	\$3,299.00
P4U-PS201S	1 Speed 1500RPM	\$3,649.00
P4U-PS301S	1 Speed 1500RPM	\$3,749.00
P4U-PV201	9 Speed Variable 500-3600RPM	\$4,649.00
P4U-PV201S	9 Speed Variable 500-3600RPM	\$4,949.00
P4U-PV301S	9 Speed Variable 500-3600RPM	\$5,049.00



Prep4You Discs

Slicers - 1 mm to 10 mm



1 mm	DS650213	\$129.00
2 mm	DS650214	\$129.00
3 mm	DS650215	\$129.00
4 mm	DS650237	\$129.00
6 mm	DS650217	\$129.00
8 mm	DS650220	\$299.00
10 mm	DS650221	\$299.00

Shredders - 2 mm to 8 mm



2 mm	DS650209	\$129.00
4 mm	DS650210	\$129.00
8 mm	DS650211	\$129.00

Dicing Kits - 8x8x8mm and 10x10x10mm



8x8x8 mm	DS650224	\$129.00
10x10x10 mm	DS650225	\$129.00

Wavy slicers - 3 mm and 5 mm



3 mm	DS650218	\$129.00
5 mm	DS650219	\$129.00

Graters - 2 mm to 7 mm



2 mm	DS650198	\$129.00
3 mm	DS650199	\$129.00
4 mm	DS650205	\$129.00
7 mm	DS650207	\$129.00
special disc for parmesan		



Special tool for fast and easy cleaning of dicing grids

PNC 650110	DS650110	\$129.00
------------	----------	----------

Food Prep + Butcher

Prep4You Accessories

Smooth blade rotors



2.6L	DS650227	\$129.00
3.6L	DS650234	\$209.00

Micro-toothed blade rotors



2.6L	DS650226	\$129.00
3.6L	DS650233	\$129.00

Ejector for vegetable slicer



DS650232	\$129.00
----------	----------

Cutting bowls



2.6L Copolyester	DS650229	\$129.00
2.6L Stainless Steel	DS650228	\$129.00
3.6L Stainless Steel	DS650235	\$129.00

Compact Food Processor with Variable Speed



YASAKI

Specifications:

HR-6 565x365x440 | 19kg | 240V | 1800W | 10A
HR-9 570x385x460 | 20kg | 240V | 1800W | 10A
HR-12 575x385x525 | 22kg | 240V | 2000W | 10A

CODE	DESCRIPTION	PRICE
HR-6	6L	\$1,349.00
HR-9	9L	\$1,449.00
HR-12	12L	\$1,899.00

Bowl Cutter Mixer Series



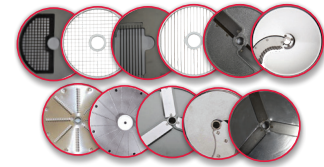
YASAKI

Specifications:

BC-5V2 435x435x665 | 21.5kg | 240V | 1500W | 15A
BC-8V2 435x435x665 | 21.8kg | 240V | 1500W | 15A
BC-12V2 495x455x790 | 29kg | 240V | 2200W | 15A

CODE	DESCRIPTION	PRICE
BC-5V2	2 Speed 5 L 1500/2800RPM	\$2,199.00
BC-8V2	2 Speed 8 L 1500/2800RPM	\$2,649.00
BC-12V2	2 Speed 12 L 1500/2200RPM	\$2,849.00

VC Cutting Discs - 205mm Diamond Cutting Surface



YASAKI

CODE	DESCRIPTION	PRICE
DS888	Dicing (Semicircle) 8x8x8mm	\$149.00
DS1000	Dicing (Semicircle) 10x10x10mm	\$149.00
DS140	Dicing (Semicircle) 14x14x14mm	\$149.00
DS2000	Dicing (Semicircle) 20x20x14mm	\$149.00
DR888	Dicing (Circle) 8x8x8mm	\$199.00
DR1000	Dicing (Circle) 10x10x10mm	\$199.00
DR140	Dicing (Circle) 14x14x14mm	\$199.00
FS808	French Fries (Semicircle) 8x8mm	\$149.00
FS100	French Fries (Semicircle) 10x10mm	\$149.00
FR808	French Fries (Circle) 8x8mm	\$199.00
FR100	French Fries (Circle) 10x10mm	\$199.00
J303	Julienne (Aluminium) 3x3mm	\$199.00
J404	Julienne (Aluminium) 4x4mm	\$199.00
WA005	Crimping Slicing 3 Blades	\$129.00
G002	Grating/Shredding 2mm	\$129.00
G003	Grating/Shredding 3mm	\$129.00
G005	Grating/Shredding 5mm	\$129.00
G007	Grating/Shredding 7mm	\$129.00
G010	Grating/Shredding 10mm	\$129.00
V001	Fine Grating	\$129.00
SP002	Slicer (Carbon) 2mm	\$129.00
SP004	Slicer (Carbon) 4mm	\$129.00
SS002	Slicer (Aluminium Semicircle) 2mm	\$129.00
SS004	Slicer (Aluminium Semicircle) 4mm	\$129.00
SS010	Slicer (Aluminium Semicircle) 10mm	\$129.00
SA001	Slicer (Aluminium Circle) 1mm	\$129.00
SA002	Slicer (Aluminium Circle) 2mm	\$129.00
SA004	Slicer (Aluminium Circle) 4mm	\$129.00
SA006	Slicer (Aluminium Circle) 6mm	\$129.00
SA008	Slicer (Aluminium Circle) 8mm	\$129.00
SA010	Slicer (Aluminium Circle) 10mm	\$129.00
SA014	Slicer (Aluminium Circle) 14mm	\$129.00

Professional Deli Slicers



YASAKI

Specifications:

HBS-250 575x464x415 | 16.4kg | 240V | 150W | 10A
HBS-300 565x520x565 | 22.5kg | 240V | 250W | 10A
HBS-300C 748x686x678 | 34.8kg | 240V | 250W | 10A

CODE	DESCRIPTION	PRICE
HBS-250	250mm Blade 0.2-12mm Thickness	\$899.00
HBS-300	300mm Blade 0.2-15mm Thickness	\$1,399.00
HBS-300C	Vertical Slicer 300mm Blade 0.2-15mm Thickness	\$2,349.00

VC Vegetable Cutters



YASAKI

Specifications:

VC55MF 585x305x555 | 26kg | 240V | 550W | 10A
VC65MS 655x325x545 | 26kg | 240V | 750W | 10A

CODE	DESCRIPTION	PRICE
VC55MF	Half moon hopper	\$1,249.00
VC65MS	Full moon hopper	\$2,299.00

Price excludes GST. Prices and specifications are subject to change without notice. Pictures are for illustrative purpose and final product may differ.

Food Prep + Butcher

Stick Blenders



YASAKI

Specifications:

ISB200VV	464mm 1.61kg 240V 220W 10A
ISB250VV	609mm 2.58kg 240V 350W 10A
ISB300VV	659mm 2.78kg 240V 350W 10A
ISB400VV	759mm 3.26kg 240V 500W 10A
ISB500VV	859mm 3.54kg 240V 500W 10A
ISB750VV	946mm 3.82kg 240V 750W 10A
WIK250	250mm 0.86kg

CODE	DESCRIPTION	PRICE
ISB200VV	200mm Tube Length	\$399.00
ISB250VV	250mm Tube Length	\$479.00
ISB300VV	300mm Tube Length	\$639.00
ISB400VV	400mm Tube Length	\$699.00
ISB500VV	500mm Tube Length	\$759.00
ISB750VV	550mm Tube Length	\$869.00
WIK250	Whisk Attachment	\$269.00
WB-3	Wall Hanger	\$29.00
SB-BTH	Support Bracket	\$159.00

Single Chamber Commercial Packing Machine



YASAKI

Specifications:

DJ-DZ350/M	425x560x360 44kg 240V 900W 10A	
CODE	DESCRIPTION	PRICE
DJ-DZ350/M	350x8mm Single Sealing Bar	\$3,149.00
VB2030	Vacuum bag 200x300mm 200qty	\$79.00
VB2535	Vacuum bag 250x350mm 200qty	\$109.00
VB2639	Vacuum bag 260x390mm 200qty	\$119.00

Commercial Vacuum Packing Machines



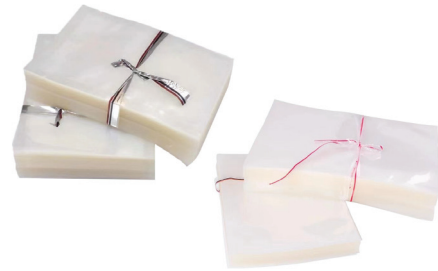
YASAKI

Specifications:

ZJ-VM300B1	490x450x320 35kg 240V 400W 10A
ZJ-VM400B2	560x500x460 70kg 240V 900W 10A
ZJ-VM500B2	630x620x460 80kg 240V 900W 10A
ZJ-VM500S2	630x620x1050 95kg 240V 900W 10A
ZJ-VM500S2C	1250x750x950 240kg 415V 1500W 3-NA

CODE	DESCRIPTION	PRICE
ZJ-VM300B1	Table top unit 1 sealer	\$1,999.00
ZJ-VM400B2	Table top unit 2 sealer	\$2,749.00
ZJ-VM500B2	Table top unit 2 sealer	\$3,299.00
ZJ-VM500S2	Floor unit 2 sealer	\$3,749.00
ZJ-VM500S2C	Floor unit 4 sealer	\$7,149.00

Vacuum Bags



CODE	DESCRIPTION	PRICE
VB3035	Set of 100pcs	\$39.00
VB1535	Set of 100pcs	\$19.00

S/S Electric Meat Tenderizer & Meat Strip Slicer



YASAKI

Specifications:

TR8SH	560x306x560 12.3kg 240V 350W 10A
TR8SH-TDA	240x130x12 4kg
TR8SH-MSA	240x130x12 4kg

CODE	DESCRIPTION	PRICE
TR8SH	220kg/h	\$1,199.00
TR8SH-TDA	Meat Tenderizer Attachment	\$949.00
TR8SH-MSA	Meat Cutter Attachment	\$959.00

Heavy Duty Bench Miners



MATADOR
NO BULL - JUST PERFORMANCE

Specifications:

TC 8	370x250x490 20.5kg 240V 550W 10A
TC12	420x265x548 24.5kg 240V 735W 10A
AK32MG	495x320x580 29kg 240V 900W 10A

CODE	DESCRIPTION	PRICE
TC 8	80kg/h #8 Head	\$969.00
TC12	150kg/h #12 Head	\$1,199.00
AK32MG	200kg/h #32 Head	\$2,649.00

Sausage Filler



Specifications:

SV-7	300x340x830 13kg
SV-15	300x330x710 17kg

CODE	DESCRIPTION	PRICE
SV-7	7 Litre	\$499.00
SV-15	15 Litre	\$699.00

Food Carriers + GN Pans

S/S Gastronorm Pans



CODE	DESCRIPTION	PRICE	CODE	DESCRIPTION	PRICE	CODE	DESCRIPTION	PRICE
GN19065	1/9 108x176x65	\$9.00	GN12020	1/2 325x265x20	\$19.00	GN19000	1/9 Lid	\$9.00
GN19100	1/9 108x176x100	\$9.00	GN12040	1/2 325x265x40	\$19.00	GN16000	1/6 Lid	\$9.00
GN16065	1/6 162x176x65	\$9.00	GN12065	1/2 325x265x65	\$19.00	GN14000	1/4 Lid	\$9.00
GN16100	1/6 162x176x100	\$19.00	GN12100	1/2 325x265x100	\$29.00	GN13000	1/3 Lid	\$9.00
GN16150	1/6 162x176x150	\$29.00	GN12150	1/2 325x265x150	\$39.00	GN12000	1/2 Lid	\$19.00
GN14065	1/4 162x265x65	\$19.00	GN23065	2/3 325x353x65	\$29.00	GN23000	2/3 Lid	\$19.00
GN14100	1/4 162x265x100	\$19.00	GN23100	2/3 325x353x100	\$39.00	GN11000	1/1 Lid	\$29.00
GN14150	1/4 162x265x150	\$29.00	GN23150	2/3 325x353x150	\$49.00	GNP11100	1/1 Perforated Pan 530x325x100	\$39.00
GN13065	1/3 325x176x65	\$19.00	GN11020	1/1 530x325x20	\$19.00	GNP11150	1/1 Perforated Pan 530x325x150	\$49.00
GN13100	1/3 325x176x100	\$19.00	GN11065	1/1 530x325x65	\$29.00			
GN13150	1/3 325x176x150	\$29.00	GN11100	1/1 530x325x100	\$39.00			
			GN11150	1/1 30x325x150	\$49.00			

Stainless Steel Benches

**MODULAR
SYSTEMS**

304 S/S Kitchen Tidy Cabinet with Sink, Drawers & Doors

CODE	DESCRIPTION	PRICE
Single Sink Left – 600mm Depth		
SC-6-1200L-H	1200x600x900+150	\$1,749.00
SC-6-1500L-H	1500x600x900+150	\$2,149.00
SC-6-1800L-H	1800x600x900+150	\$2,549.00
SC-6-2100L-H	2100x600x900+150	\$2,849.00
Single Sink Right – 600mm Depth		
SC-6-1200R-H	1200x600x900+150	\$1,749.00
SC-6-1500R-H	1500x600x900+150	\$2,149.00
SC-6-1800R-H	1800x600x900+150	\$2,549.00
SC-6-2100R-H	2100x600x900+150	\$2,849.00



Quality 304 S/S Kitchen Tidy with Doors



CODE	DESCRIPTION	PRICE
Single Side – 600mm Depth		
DTHT6-1200-H	1200x600x900	\$1,499.00
DTHT6-1500-H	1500x600x900	\$1,749.00
Pass-Thru – 600mm Depth		
STHT6-1200-H	1200x600x900	\$1,549.00
STHT6-1500-H	1500x600x900	\$1,849.00
STHT6-1800-H	1800x600x900	\$2,149.00

CODE	DESCRIPTION	PRICE
Single Side – 700mm Depth		
DTHT-1800-H	1800x700x900	\$2,299.00
Pass-Thru – 700mm Depth		
STHT-1800-H	1800x700x900	\$2,349.00

S/S Work Tables with Undershelf



CODE	DESCRIPTION	PRICE
600Dx900H with Adjustable S/S Feet		
WB6-0600/A	600x600x900	\$519.00
WB6-0900/A	900x600x900	\$589.00
WB6-1200/A	1200x600x900	\$729.00
WB6-1500/A	1500x600x900	\$839.00
WB6-1800/A	1800x600x900	\$949.00
WB6-2100/A	2100x600x900	\$1,199.00
WB6-2400/A	2400x600x900	\$1,299.00

CODE	DESCRIPTION	PRICE
700Dx900H with Adjustable S/S Feet		
WB7-0600/A	600x700x900	\$529.00
WB7-0900/A	900x700x900	\$629.00
WB7-1200/A	1200x700x900	\$749.00
WB7-1500/A	1500x700x900	\$859.00
WB7-1800/A	1800x700x900	\$989.00
WB7-2100/A	2100x700x900	\$1,199.00
WB7-2400/A	2400x700x900	\$1,349.00
700Dx900H with Castors - 2 Front Castors Lockable		
WBM7-0600/A	600x700x900	\$729.00
WBM7-0900/A	900x700x900	\$829.00
WBM7-1200/A	1200x700x900	\$939.00
WBM7-1500/A	1500x700x900	\$1,199.00
WBM7-1800/A	1800x700x900	\$1,349.00
WBM7-2100/A	2100x700x900	\$1,749.00
WBM7-2400/A	2400x700x900	\$1,849.00

304 S/S Work Bench with Drawers & Undershelf



CODE	DESCRIPTION	PRICE
775mm Depth		
SWBD7-1	610x775x500	\$1,549.00
SWBD7-2	915x775x500	\$1,849.00
850mm Depth		
SWBD8-1	610x850x500	\$1,549.00
SWBD8-2	915x850x500	\$1,949.00
SWBD8-3	1220x850x500	\$2,299.00

S/S Work Tables with Undershelf & Splashback



CODE	DESCRIPTION	PRICE
600Dx900H with Adjustable S/S Feet		
WBB6-0600/A	600x600x900	\$529.00
WBB6-0900/A	900x600x900	\$629.00
WBB6-1200/A	1200x600x900	\$729.00
WBB6-1500/A	1500x600x900	\$859.00
WBB6-1800/A	1800x600x900	\$989.00
WBB6-2100/A	2100x600x900	\$1,199.00
WBB6-2400/A	2400x600x900	\$1,349.00
700Dx900H with Adjustable S/S Feet		
WBB7-0300/A	300x700x900	\$479.00
WBB7-0450/A	450x700x900	\$529.00
WBB7-0600/A	600x700x900	\$549.00
WBB7-0900/A	900x700x900	\$649.00
WBB7-1200/A	1200x700x900	\$759.00
WBB7-1500/A	1500x700x900	\$909.00
WBB7-1800/A	1800x700x900	\$1,049.00
WBB7-2100/A	2100x700x900	\$1,249.00
WBB7-2400/A	2400x700x900	\$1,399.00

S/S Sinks Bench with Pot Shelf Single Sink



CODE	DESCRIPTION	PRICE
600Dx900H-Single Sink 400x400x300		
SSB6-1200L/A	1200x600x900	\$1,059.00
SSB6-1200R/A	1200x600x900	\$1,059.00
SSB6-1200C/A	1200x600x900	\$1,059.00
SSB6-1500L/A	1500x600x900	\$1,349.00
SSB6-1500R/A	1500x600x900	\$1,349.00
SSB6-1500C/A	1500x600x900	\$1,349.00
SSB6-1800L/A	1800x600x900	\$1,399.00
SSB6-1800R/A	1800x600x900	\$1,399.00
SSB6-2400L/A	2400x600x900	\$1,649.00
SSB6-2400R/A	2400x600x900	\$1,649.00

700Dx900H-Single Sink 450x450x300		
SSB7-1200L/A	1200x700x900	\$1,149.00
SSB7-1200R/A	1200x700x900	\$1,149.00
SSB7-1200C/A	1200x700x900	\$1,149.00
SSB7-1500L/A	1500x700x900	\$1,399.00
SSB7-1500R/A	1500x700x900	\$1,399.00
SSB7-1500C/A	1500x700x900	\$1,399.00
SSB7-1800L/A	1800x700x900	\$1,549.00
SSB7-1800R/A	1800x700x900	\$1,549.00
SSB7-1800C/A	1800x700x900	\$1,549.00

S/S Sinks Bench with Pot Shelf Double Sink



CODE	DESCRIPTION	PRICE
600Dx900H-Double Sink 2x 400x400x300		
DSB6-1200C/A	1200x600x900	\$1,199.00
DSB6-1500L/A	1500x600x900	\$1,349.00
DSB6-1500R/A	1500x600x900	\$1,349.00
DSB6-1500C/A	1500x600x900	\$1,349.00
DSB6-1800L/A	1800x600x900	\$1,549.00
DSB6-1800R/A	1800x600x900	\$1,549.00
DSB6-1800C/A	1800x600x900	\$1,549.00

700Dx900H-Double Sink 2x 450x450x300		
DSB7-1200C/A	1200x700x900	\$1,399.00
DSB7-1500L/A	1500x700x900	\$1,599.00
DSB7-1500R/A	1500x700x900	\$1,599.00
DSB7-1500C/A	1500x700x900	\$1,599.00
DSB7-1800L/A	1800x700x900	\$1,749.00
DSB7-1800R/A	1800x700x900	\$1,749.00
DSB7-1800C/A	1800x700x900	\$1,749.00
DSB7-2100L/A	2100x700x900	\$2,049.00
DSB7-2100R/A	2100x700x900	\$2,049.00
DSB7-2100C/A	2100x700x900	\$2,049.00
DSB7-2400L/A	2400x700x900	\$2,449.00
DSB7-2400R/A	2400x700x900	\$2,449.00
DSB7-2400C/A	2400x700x900	\$2,449.00

Centre Island Work Bench with Drawers Both Sides & Undershelf



Shown with WBO1-1800 Overshelf

CODE	DESCRIPTION	PRICE
SWBD10-1200	1200x1000x900	\$2,999.00
SWBD10-1500	1500x1000x900	\$3,549.00
SWBD10-1800	1800x1000x900	\$42,49.00

Corner Work Bench with Splashback & Undershelf



CODE	DESCRIPTION	PRICE
600D x 900H + 150mm Splashback		
WBCB6-0600/A	600x600x900	\$929.00
700D x 900H + 150mm Splashback		
WBCB7-0700/A	700x700x900	\$969.00

Corner Work Bench with Splashback & Undershelf



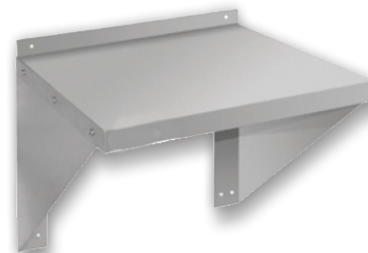
CODE	DESCRIPTION	PRICE
600D x 900H + 150mm Splashback		
WBCB6-0900/A	900x900x900	\$969.00
700D x 900H + 150mm Splashback		
WBCB7-0900/A	900x900x900	\$1,049.00

Wallshelves



CODE	DESCRIPTION	PRICE
Solid Wallshelves		
0600-WS1	600x300x300	\$119.00
0900-WS1	900x300x300	\$149.00
1200-WS1	1200x300x300	\$179.00
1500-WS1	1500x300x300	\$199.00
1800-WS1	1800x300x300	\$259.00
Pipe Wallshelves		
0600-WSP1	600x300x300	\$149.00
0900-WSP1	900x300x300	\$159.00
1200-WSP1	1200x300x300	\$189.00
1500-WSP1	1500x300x300	\$219.00
1800-WSP1	1800x300x300	\$309.00

Microwave Shelf



CODE	DESCRIPTION	PRICE
WS-530	530x530x490	\$289.00

Stainless Steel Benches

**MODULAR
SYSTEMS**

Quality 304 S/S Outlet Table with Pot Shelf



CODE	DESCRIPTION	PRICE
700Dx900H - Right		
WBBD7-0600R/A	600x700x900	\$589.00
WBBD7-0900R/A	900x700x900	\$749.00
WBBD7-1200R/A	1200x700x900	\$879.00
WBBD7-1500R/A	1500x700x900	\$1049.00
WBBD7-1800R/A	1800x700x900	\$1149.00
700Dx900H - Left		
WBBD7-0600L/A	600x700x900	\$589.00
WBBD7-0900L/A	900x700x900	\$749.00
WBBD7-1200L/A	1200x700x900	\$879.00
WBBD7-1500L/A	1500x700x900	\$1,049.00
WBBD7-1800L/A	1800x700x900	\$1,149.00

Quality 304 S/S Sink Inlet with Pot Shelf



CODE	DESCRIPTION	PRICE
700Dx900H - Right		
Singl Sink 400x400x300		
SSBD7-1200R/A	1200x700x900	\$1,199.00
SSBD7-1500R/A	1500x700x900	\$1,349.00
SSBD7-1800R/A	1800x700x900	\$1,499.00
Double Sink 2x 400x400x300		
DSBD7-1800R/A	1800x700x900	\$1,749.00
DSBD7-2400R/A	2400x700x900	\$2,149.00
700Dx900H - Left		
Singl Sink 400x400x300		
SSBD7-1200L/A	1200x700x900	\$1,199.00
SSBD7-1500L/A	1500x700x900	\$1,349.00
SSBD7-1800L/A	1800x700x900	\$1,499.00
Double Sink 2x 400x400x300		
DSBD7-1800L/A	1800x700x900	\$1,749.00
DSBD7-2400L/A	2400x700x900	\$2,149.00

Leg & Castor Kits



CODE	QUANTITY	PRICE
Legs 42mmØ 1mm S/S x 850mm High		
SSLEG/4	Set of 4 Legs	\$149.00
SSLEG/6	Set of 6 Legs	\$219.00
Castors 42mmØ 1mm S/S x 100mmØ Castor x 850mm High		
LC-01/A	2x Castor with Brake	\$269.00
	2x Castor no Brake	
LC-02/A	3x Castor with Brake	\$329.00
	3x Castor no Brake	
Bolt Down Feet		
DM-FEET	1 Bolt Down Foot	\$29.00

304 S/S Overshelf for Premium Range



CODE	DESCRIPTION	PRICE
Single Tier		
WBO1-1200	1200x300x450	\$319.00
WBO1-1500	1500x300x450	\$369.00
WBO1-1800	1800x300x450	\$399.00
Double Tier		
WBO2-1200	1200x300x750	\$489.00
WBO2-1500	1500x300x750	\$549.00
WBO2-1800	1800x300x750	\$629.00

S/S Mop Sinks & Sinks & S/S Hand Basin



CODE	DESCRIPTION	PRICE
SMS-H	Single Mop Sink 520x515x800	\$639.00
SKBEN01-1818N	Single Sink 584x610x1120	\$649.00
SHY-2N	430x400x340	\$149.00

Extra Table Shelves - Pot Rack



CODE	WIDTH	PRICE
Pot Rack Undershelves - 490mm Deep		
PRU6-0600/A	490	\$189.00
PRU6-0900/A	790	\$209.00
PRU6-1200/A	1090	\$249.00
PRU6-1500/A	1390	\$299.00
PRU6-1800/A	1690	\$319.00
PRU6-2100/A	1990	\$359.00
PRU6-2400/A	2290	\$409.00
Pot Rack Undershelves - 590mm Deep		
PRU7-0600/A	490	\$219.00
PRU7-0900/A	790	\$259.00
PRU7-1200/A	1090	\$299.00
PRU7-1500/A	1390	\$329.00
PRU7-1800/A	1690	\$369.00
PRU7-2100/A	1990	\$409.00
PRU7-2400/A	2290	\$459.00

S/S Trolley



CODE	DESCRIPTION	PRICE
Basin Trolley - Capacity 80kg		
YC-102D	855x535x940	\$459.00
2 Shelf Trolley - Capacity 80kg		
YC-102	855x535x930	\$299.00
3 Shelf Trolley - Capacity 120kg		
YC-103	855x535x930	\$369.00

Taps



CODE	DESCRIPTION	PRICE
HD4257	330mm High Sink Mixer	\$249.00
FD0020-CCT	700mm High Pre-rinse Unit/Pot Filler	\$599.00

4 Tier Shelving Kits



CODE	DESCRIPTION	PRICE	EXTRA SHELF
457mm Shelf Depth			
B18/24	610x457x1880	\$199.00	\$50.00
B18/30	760x457x1880	\$219.00	\$55.00
B18/36	915x457x1880	\$239.00	\$60.00
B18/42	1067x457x1880	\$259.00	\$65.00
B18/48	1220x457x1880	\$279.00	\$70.00
B18/54	1372x457x1880	\$299.00	\$75.00
B18/60	1525x457x1880	\$339.00	\$85.00
B18/72	1830x457x1880	\$399.00	\$100.00
610mm Shelf Depth			
B24/24	610x610x1880	\$239.00	\$60.00
B24/30	760x610x1880	\$259.00	\$65.00
B24/36	915x610x1880	\$279.00	\$70.00
B24/42	1067x610x1880	\$299.00	\$75.00
B24/48	1220x610x1880	\$339.00	\$85.00
B24/54	1372x610x1880	\$359.00	\$90.00
B24/60	1525x610x1880	\$399.00	\$100.00
B24/72	1830x610x1880	\$459.00	\$115.00

Accessories & Options

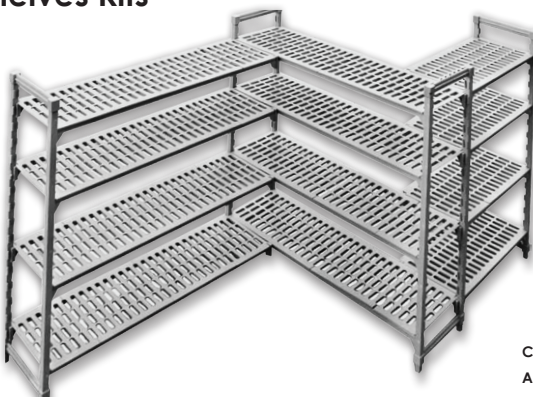


CODE	DESCRIPTION	PRICE
CASTORWITHOUTBRAKE	Castor without Brake	\$49.00
CASTORWITHBRAKE	Castor with Brake	\$79.00
POST-CAP	Post Cap	\$9.00
LOCKINGCLIP	Locking Clip	\$9.00
N-CLIP	Shelf Clip	\$9.00
WSP008	Post Clamp	\$9.00
B-POST/910MM	Set of 4 Posts 910mm	\$59.00
B-POST/1880MM	Set of 4 Posts 1880mm	\$79.00
B-POST/2184MM	Set of 4 Posts 2184mm	\$99.00

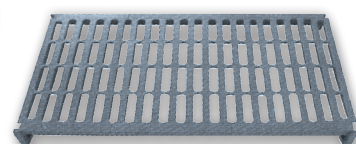
Poly Coated Steel with Vented Shelves Kits



CODE	DESCRIPTION	PRICE
4 Tier Vented Shelving Kit		
PSU18/36	910x455x1800	\$659.00
PSU18/48	1220x455x1800	\$759.00
PSU18/60	1525x455x1800	\$869.00
PSU18/72	1825x455x1800	\$999.00



CODE	DESCRIPTION	PRICE
4 Tier Add-On Vented Shelving Kit		
PSA18/36	910x455x1800	\$599.00
PSA18/48	1220x455x1800	\$689.00
PSA18/60	1525x455x1800	\$809.00
PSA18/72	1825x455x1800	\$919.00



CODE	DESCRIPTION	PRICE
Additional Vented Shelves (each)		
PVK18/36	910x455	\$149.00
PVK18/48	1220x455	\$189.00
PVK18/60	1525x455	\$219.00
PVK18/72	1825x455	\$229.00
Corner Connectors		
PCC	2x Corner Connectors	\$19.00

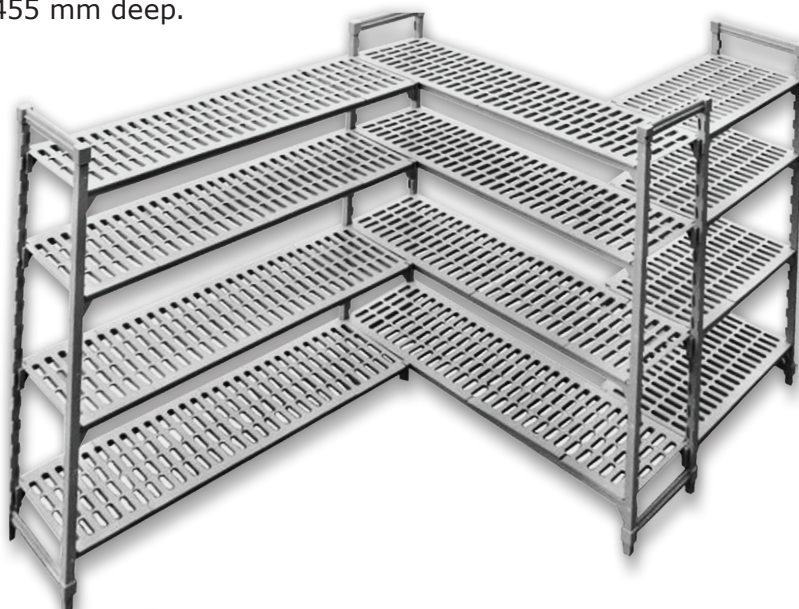
Gastronorm Rack



CODE	DESCRIPTION	PRICE
GTS-180	470-520x740x1810	\$729.00

POLY COATED STEEL WITH VENTED SHELVES KITS

Environmentally friendly & rust-free shelving. A revolutionary shelving system that makes storage easy in any environment, wet or dry. Easy to adjust & configure. Easy to clean. Extremely durable, strong & stable. 1800 mm high × 455 mm deep.



Code	Dimensions (WxDxH mm)
4 Teir Vented Shelving Kit	
PSU18/36	910x455x1800
PSU18/48	1220x455x1800
PSU18/60	1525x455x1800
PSU18/72	1825x455x1800

Code	Dimensions (WxDxH mm)
4 Teir Add-On Vented Shelving Kit	
PSA18/36	910x455x1800
PSA18/48	1220x455x1800
PSA18/60	1525x455x1800
PSA18/72	1825x455x1800

Code	Dimensions (WxD mm)
Additional Vented Shelves (each)	
PVK18/36	910x455
PVK18/48	1220x455
PVK18/60	1525x455
PVK18/72	1825x455

Code	Description
PCC	2x Corner Connectors

Stainless Steel Benches

FEDERAL HOSPITALITY EQUIPMENT PTY LIMITED (FHE)

ABN 841 693 574 48

TERMS OF TRADE (August 2018, v08)

1 APPLICATION

- 1.1 These terms and conditions ("the Terms") contained herein apply to all contracts and agreements between Federal Hospitality Equipment Pty Ltd ("FHE") and its customers (collectively "the parties") in respect of all transactions, the goods of which are supplied or delivered by FHE to a customer ("the Customer"). "Goods" means goods as defined by the Trade Practices Act, 1974 (Cth) ("TPA") and the Sale of Goods Act 1923 (NSW) ("SGA") that is supplied by FHE either to the Customer.
- 1.2 No amendment, alteration, waiver or cancellation of any of these Terms is binding on the FHE unless confirmed by the FHE in writing.
- 1.3 The Customer acknowledges that no employee or agent of FHE has any right to make any representation, warranty or promise in relation to the Goods its sale or delivery other than as contained in these Terms. The Customer acknowledges that it has not relied on any representation, warranty or promise other than any provided by FHE expressly, in writing, signed by the Parties, which has the effect of varying or adding to the Terms agreed.

2 TERMS OF PAYMENT

- 2.1 All Prices quoted are valid for 30 days and do not include delivery costs. Prices are subject to change without notice. Prices are ex GST.
- 2.2 Payments are to be made direct to FHE, strictly net, without any deduction or discount other than as stated herein or in the relevant invoice or statement.
- 2.3 Unless otherwise agreed and expressed in writing, payment is required prior to Goods being collected or delivered.
- 2.4 Payment is deemed received only upon receipt of cash or cleared funds.
- 2.5 Interest is payable on all overdue accounts calculated on a daily basis at the rate of 15% per annum calculated daily as from the due date for payment until payment is received by FHE.

3 TITLE/OWNERSHIP IN GOODS

- 3.1 Legal and beneficial ownership of Goods supplied by FHE will not pass to the Customer until such time as the Goods payment for the Goods has been received by FHE.
- 3.2 To protect FHE's security interest in the Goods until payment is made FHE may choose to register the Parties agreement under the Personal Properties Securities Act 2009. The Customer agrees to do all things necessary to facilitate such registration.

4 RE-SALE OF GOODS – TRUSTEE SELLER

- 4.1 FHE permits the Customer to sell the Goods as a trustee of FHE ("Trustee Re-Seller") where the Trustee Re-Seller has the right to sell the Goods in its own name at full market value and in the ordinary course of business provided always that the condition in clause 4.2.4 is satisfied.
- 4.2 Until FHE receives payment for the Goods supplied to the Trustee Seller:
- 4.2.1 the Trustee Seller will hold the Goods only as bailee for FHE and at all times in the capacity of trustee;
- 4.2.2 the Goods must be stored in such manner that they are readily distinguishable from other goods owned by the Trustee Seller or other persons and so as to clearly show that they are the property of FHE;
- 4.2.3 the Trustee Seller must indemnify FHE from and against any claim, action, proceeding, damage, loss, cost, expense or liability incurred or suffered by FHE arising out of the possession, use or disposal of the Goods by the Trustee Seller or repossession or attempted repossession of them by FHE; and
- 4.2.4 the Trustee Re-Seller must always receive and handle proceeds of any sale of any Goods on trust for FHE. The Trustee Re-Seller acknowledges that such proceeds belong to FHE and FHE retains exclusive rights to those proceeds as against any Customer and the Trustee Re-Seller.
- The Trustee RE-seller must hold the proceeds of the sale of the Goods in a separate account or otherwise clearly identify and distinguish proceeds held on trust to those held by the Trustee Re-Seller in its own right in respect of sale of Goods not sold as a trustee of FHE.
- 4.3 If the Customer resells any Goods then, unless the Goods are clearly identifiable by serial numbers or other distinguishing marks, the Customer is deemed to have disposed of the Goods in the chronological order of supply by the Company to the Customer (oldest to most recent).

5 DEFAULT

- 5.1 The following events are each acts of Default ("Events of Default"):
- 5.1.1 The Customer fails to pay for the Goods in accordance with these Terms or any other written agreement between the Parties;
- 5.1.2 FHE receives notice of, or reasonably believes that a third party may attempt to levy execution against or attach any Goods supplied to a Customer, Trustee Re-Seller or under any consignment arrangement, for which payment has not yet been made and received; or
- 5.1.3 An event occurs that can reasonably be considered one likely to adversely affect the Customer's ability to pay for the Goods (including but not limited to the appointment of a receiver, receiver and manager, administrator, controller, liquidator, provisional liquidator, trustee or similar person (each an "insolvency representative") to the Customer's undertaking).
- 5.2 Where there has been an Event of Default, FHE may send the Customer a default notice ("Default Notice"). The Default Notice will outline the nature of the Customer's default and what the Customer is required to do to correct the default. The Customer will have 14 business days to rectify the default.
- 5.3 If the Customer does not comply with the Default Notice within the time required under clause 5.2:
- 5.3.1 it becomes immediately liable to pay FHE all money owing with interest on that amount from the due date until payment at the rate of 15% per cent annum. In these circumstances, as title to the Goods does not pass until FHE has been paid, FHE may repossess and sell the Goods and apply the proceeds of the sale towards repayment of the money owed under its contract with the Customer.
- 5.3.2 the Customer agrees to pay all costs and expenses incurred by FHE in exercising FHE rights of recovery from the Customer and the guarantor, if any, and indemnify FHE against any losses resulting from the default.
- 5.3.3 the Customer irrevocably permit FHE or any person authorised by FHE in writing, upon reasonable notice, to enter the Customer's premises or the premises where the Goods are reasonably believed by FHE to be held on behalf of the Customer.
- 5.3.4 The Customer also agrees to indemnify and hold FHE harmless for all reasonable costs and expenses associated with the recovery of the Goods and losses, if any, on their resale, in addition to all costs and expenses incurred by FHE in defending any third party claim brought against FHE in attempting to recover the Goods.
- 5.3.5 FHE may in its sole discretion at any time thereafter, without further notice to the Customer and without prejudice to any other rights which it may have against the Customer, terminate the contract and seek all remedies available at law to recover any loss incurred as a result of the Event of Default.
- 5.3.6 The Customer agrees to sign documents or do all things necessary to perfect FHE's rights under contract and appoints FHE as the Customer's attorney to sign any document or do anything that may reasonably be required to enforce FHE rights.

- 6 RIGHT TO ENTER PREMISES – Where there has been an Event of Default, in addition to termination, the Customer:

- 6.1 irrevocably authorises FHE by itself, its agents or representatives at all reasonable times, without notice, to enter onto (with force if reasonably necessary) and at all necessary time(s), to remain in and on any premises where the Goods are located in order to collect the Goods, without being

- guilty of any manner of trespass; and
- 6.2 assigns to FHE all the Customer's rights to enter onto and remain in and on such premises until all the Goods have been collected and indemnifies FHE against any action claim cost damage suffered by FHE in so doing.

7 ADMINISTRATION, RECEIVERSHIP ETC. – To the fullest extent permitted by law:

- 7.1 In any of the circumstances referred to in clause 5.1.3, neither the Customer nor its insolvency representative or any other person acting for the Customer and/or its creditors is entitled to sell, charge, remove, dispose of, use or otherwise deal with the Goods in any way inconsistent with FHE's ownership of the Goods, without FHE's prior written approval.
- 7.2 The Customer, its insolvency representative or any other person acting for or on behalf of the Customer and/or its creditors is obliged to re-deliver the Goods to FHE immediately at the expense of the Customer or its appointed insolvency representative
- 7.3 If the Goods are returned to or collected by FHE, FHE will within 30 days, account to the Customer or its legal representative for all monies received for the Goods from the Customer less FHE's reasonable costs incurred in retrieving same.

8 CONSIGNMENT – If FHE supplies Goods on consignment ("Consignment Goods") then:

- 8.1 the Customer must bear all risk of loss and/or damage to the Consignment Goods and must, in addition effect and maintain insurance against loss, fire and theft of the Consignment Goods, in an amount adequate to cover FHE's interest as owner of such Consignment Goods;
- 8.2 the Customer must keep the Consignment Goods free from liens, encumbrances and adverse claims of all kinds which might otherwise diminish or adversely affect FHE's exercise of its full rights of ownership of the Consignment Goods;
- 8.3 if the Consignment Goods are lost or damaged while in the Customer's possession or care, the Customer undertakes to reimburse FHE, within 30 days of date of replacement or repair, as the case may be, the full cost of such replacement or repair.
- 8.4 the Customer must provide to FHE, a monthly statement by the 15th of the following month, listing in full all Consignment Goods supplied to the Customer, including full details of all purchasers of the Consignment Goods sold during the preceding month, together with the quantities of the Consignment Goods purchased and the relevant prices paid in respect of each.

9 CUSTOMER AS TRUSTEE – If the Customer carries on business as trustee of a trust then the Customer warrants that:

- 9.1 the Customer enters into the contract as trustee of a trust;
- 9.2 the Customer has all requisite powers to enter into the contract;
- 9.3 the beneficiary of the trust approves the purchase of the Goods on these Terms; and
- 9.4 liability is not limited to the assets of the trust (which are available to FHE in satisfaction of any debt incurred by such Customer) and may extend to assets held in the trustee's personal capacity; and
- 9.5 the Customer, where a corporation, will provide a personal guarantee in respect of the contract entered into between the Parties.

10 GOODS AND SERVICES TAX

- 10.1 Goods and Services tax ["GST"] has the same meaning as that defined in A New Tax System (Goods and Services Tax) Act 1999. are not included in the quoted price.
- 10.2 Any Price published by FHE is excluding GST and the Customer agrees to pay the GST component of the Price in accordance with the relevant Tax Invoice issued by FHE.

- 11 CUSTOMS DUTIES, TARIFFS AND LEVIES – Should the transaction attract any additional duties or levies, the Parties agree that the Price is excluding such additional amounts and the Customer is liable for payment of such amounts in addition to the purchase Price.

12 DELIVERY DATE, DELIVERY & FAILURE TO DELIVER

- 12.1 Any dates provided by FHE to the Customer as to the availability of Goods are regarded as estimates only and not fixed dates. FHE endeavours to use its best endeavours to provide the Goods on the dates estimated but is not obligated to provide the Goods on such dates and will not be held liable for any loss or damage suffered by the Customer if FHE fails to provide the Goods on such dates.
- 12.2 The Customer acknowledges that the estimated dates provided by FHE may change in circumstances reasonably considered beyond the control of FHE. Where the Goods cannot be delivered after the Customer has placed an order whether or not the Goods have been paid for, FHE will provide a full refund (where the Goods have been paid) and inform the Customer as soon as reasonably practical after becoming aware of its inability to deliver the Goods, without further liability or recourse by the Customer for any inconvenience caused to the Customer, including any loss or cost incurred by the Customer.
- 12.3 The Customer acknowledges that FHE may deliver the Goods prior to the estimated dates provided to the Customer and agrees to accept the Goods notwithstanding the earlier delivery of the Goods and may not refuse to take delivery on the basis of its early delivery, without any recourse as against FHE for the recovery of any loss or cost incurred by the Customer as a result of the early delivery.
- 12.4 At the Customer's request, FHE will arrange for the delivery of the Goods into the Customer's premises or at alternative premises at the direction of the Customer, solely at the Customer's expense.
- 12.5 The Customer warrants that it has authority to enter on and occupy the premises nominated for FHE to deliver the Goods and indemnifies FHE in respect of any claim action taken against FHE in delivering Goods to such premises.

13 SUPPLY OF GOODS BY INSTALMENTS

- 13.1 FHE reserves the right to deliver the Goods in whole or by instalments. If by instalment, such arrangement must be documented in additional written terms signed by the Parties.
- 13.2 Where the Goods are delivered by instalments, each instalment is deemed a separate and independent contract and the rights and obligations therein do not affect the rights and obligations of the other instalments of those Goods. For the avoidance of doubt, non delivery of Goods by way of an instalment by an estimated date provided under such independent contract does not entitle the Customer to rescind or terminate the balance of those contracts that collectively might reflect a complete order or purchase of those Goods.
- 13.3 The Customer acknowledges that Goods supplied by instalments must be accepted notwithstanding any interruption to delivery of other instalments of those Goods and the Customer has no recourse as against FHE to recover any loss or cost incurred as a result of an interrupted delivery in the supply of any Goods.

14 RISK & INSURANCE

- 14.1 The Goods are entirely at the Customer's risk from the time the Goods leave the FHE's premises notwithstanding Ownership may not pass until payment for those Goods has been received. The Customer assumes all responsibility for filing claims for damage against the carriers and other agents. The Customer must insure the Goods against loss or damage until payment has been received by FHE;
- 14.2 If any of the Goods are damaged or destroyed after shipment the Customer must direct the insurer to make payment to FHE of all insurance money payable in respect of the insurance claim made on the damaged or destroyed Goods.
- 14.3 Any insurance money received by FHE will be applied firstly against the outstanding price of the Goods that are damaged or destroyed, secondly against the outstanding price of all Goods supplied under contract, thirdly against the outstanding balance payable to FHE by the

FEDERAL HOSPITALITY EQUIPMENT PTY LIMITED (FHE) cont.

ABN 841 693 574 48

TERMS OF TRADE (August 2018, v08)

Customer, on any account under other contracts between the Parties and fourthly in payment of any balance to the Customer.

- 14.2 The Customer agrees to indemnify FHE for any loss or damage suffered by FHE as a result of any damage to the Goods where the Customer has failed to adequately insure the Goods as required under these Terms.

15 INSPECTION & RETURNS – Unless the Customer has inspected the Goods and given written notice to the Company within seven (7) days after collection or delivery that the Goods do not comply with the relevant specifications or descriptions, the Goods are deemed to have been accepted in good order and condition. Acceptance of the Goods must take place immediately following delivery and is established if the Customer signifies by words or conduct that the Goods are conforming or that the Customer retains them in spite of their nonconformity or deals with them in a way inconsistent with FHE's ownership. The Customer may reject them on good grounds after a reasonable opportunity to inspect them. The rejection must immediately be communicated to FHE in writing, with full particulars of the nonconformity. On acceptance if payment arrangements are in place then they must be honoured. If payment has been made then it will either be refunded by FHE or credited towards payment of replacement Goods for the nonconforming Goods.

16 RETAINING DAMAGED GOODS

- 16.1 The Customer's right, as against FHE to retain or dispose of the goods or services delivered or supplied notwithstanding any damage noted, is conditional upon the Customer honouring FHE's payment arrangements.

17 CANCELLATION OF ORDER – FHE at its sole discretion may agree, at the request of the Customer, to cancel modify or defer a pre-existing order for the supply of Goods. Should FHE agree to such a change, the Customer agrees to pay FHE for all reasonable costs incurred by FHE in amending or cancelling the order, including but not limited to handling fees and liability exposure to third parties involved in the provision of the Goods and any associated insurances. The Customer acknowledges that a 20% of the purchase price cancellation/variation fee is commercially fair and reasonable.

18 COMPANY'S LIABILITY LIMITED

- 18.1 These Terms do not affect the rights, entitlements and remedies conferred by the TPA or SGA.
18.2 If any statutory provisions under the TPA or any other statute(s) apply to the Contract then, to the extent to which FHE is entitled to do so, FHE's liability under the statutory provisions is limited, at FHE's option, to:
18.2.1 replacement or repair of the Goods or the supply of equivalent Goods; or
18.2.2 payment of the cost of replacing or repairing the Goods or of acquiring equivalent goods; or
18.2.3 refund of the purchase price, and in any case, FHE will not be liable for any consequential or other direct or indirect loss or damage.

19 FHE WARRANTIES

- 19.1 FHE will take all reasonable steps to supply the Goods to the Customer in an undamaged condition and free from defects in material and workmanship
19.2 Upon becoming aware of any freight damage in the Goods, the Customer must notify FHE in writing of such defect immediately. All warranty claims must be received by FHE within seven (7) days of the day of delivery
19.3 FHE provides a warranty on parts and labour against faulty material or workmanship for brand new stock for a period of twelve (12) months, six (6) months for show room stock and three (3) months for second-hand stock & spare parts from the date of delivery unless otherwise agreed in writing. The Parties acknowledge that dealer display and floor stock items are subject to special warranty terms and conditions ("Display Stock Warranties"). Such warranties covers all components contained within the equipment housing but do not include matters that FHE determine fall in the following categories:
19.3.1 Breakage of glass or plastic components of the Goods;
19.3.2 Replacement of lights, fluorescent tubes, gaskets or components which have been damaged by exposure to spillage;
19.3.3 Damage or failure of the Goods as a consequence of not removing packaging and transport materials before use;
19.3.4 Parts subject to wear and tear including but not limited to filters, oil, fuses, heating element, lamps, batteries, handles, locks, hinges;
19.3.5 Goods which have not been installed in accordance with FHE's or the manufacturer's specifications;
19.3.6 Extraordinary and unforeseeable events (voltage surges, irregular electric power supply, natural events and disaster, riots etc);
19.3.7 Repairs or replacement of Goods not bearing original serial numbers or compliance plates;
19.3.8 Damage caused to Goods due to improper use of cleaning agents, detergents, bleaches or other chemical additives or agents of a corrosive nature;
19.3.9 Any damage arising from any modification of the Goods that has taken place without prior authorisation from FHE;
19.3.10 Any use of the Goods for any reason other than its originally specified purpose;
19.3.11 Goods which are moved or repositioned whilst loaded with any stored products. Such products must be removed prior to movement. (All units are stationary units and not designed for regular movement on casters or legs);
19.3.12 Installation of Goods in places other than the original place (disassembly and reassembly in another place);
19.3.13 Carelessness, negligence or use other than that for which the Goods are designed;
19.3.14 Goods not performing correctly as a result of Goods being used in an environment whereby the ambient temperature and relative humidity are outside the operating parameters specified for those particular goods;
19.3.15 Goods not placed level and properly positioned in relation to clearances, heat / cold sources and airflow.
19.3.16 Refrigeration fans, condensers and units not been properly maintained, kept clean and free of blockages at all times. Bench fridges & freezers must be placed no nearer than 100 mm to walls or other equipment.
19.4 Espresso machines and grinders to be used for commercial applications (such as Cafes, Restaurants and Offices) come with twelve (12) months' parts and three (3) months' labour warranty.
19.5 The warranty is void if the Goods have not been maintained and serviced, or if the Goods have been subject to misuse, negligence or accident, operated incorrectly, serviced by unauthorised persons or at the date of the claim the Goods have not been paid in full. The Customer must not carry out any remedial work to alleged defective Goods without first obtaining the written consent of FHE to do so. The Customer's failure to provide written notice to FHE within the required time of any alleged breach of the above warranty will release and discharge FHE from any obligation or liability for that breach of warranty. The above warranty extends only to the Customer and to no other person.
19.6 The provisions of any act or law (including but not limited to the TPA) implying terms, conditions and warranties, or any other terms, conditions and warranties which might otherwise apply to or arise out of the Contract in relation to the Goods are hereby expressly negated and excluded to the full extent permitted by law.
19.7 The Customer expressly acknowledges and agrees that it has not relied, and FHE is not liable for any statement made by FHE, its servants, agents, representatives or employees in relation to the suitability for any purposes of the Goods.
19.8 The warranty covers defects and faulty workmanship under normal use (single shift) with recommended service maintained on the equipment.

- 19.9 Warranty, back to base applies to any item/s that can be carried and placed into a standard vehicle is/are to be returned (or sent via pre-paid freight) to the place where purchased from, or, FHE's closest official service agent, or to the FHE's head office. Delivery to FHE or its service agents, is at the Customer's care and expense. Warranty for non-carriable items are to be undertaken during normal business hours (8:00am to 5:00pm). TRAVEL costs incurred are limited to 50km from the Company or the Company's service agents.

- 19.10 Credit on replacement parts will ONLY be issued on receipt and examination of damaged parts and when determined by FHE to be defective. If more information is required on warranty prerequisites, please contact the Company's Service Department.

- 19.11 In most instances, Goods delivered may be returned for a refund, exchange or replacement within 30 days if they are retained in their original packaging and condition. This depends on the nature of the Goods. In particular:

19.11.1 certain large or bulky items may be subject to a restocking fee.

19.11.2 certain Goods cannot be returned for hygiene purposes.

19.11.3 certain Goods such as knives must be returned in adequate postal packaging for health and safety reasons.

19.11.4 certain last-in-line or special-to-order goods may also be non-returnable.

- 19.12 Non refundable/returnable Goods are listed on FHE's website and catalogue. The cost of returns may be refunded in whole or in part to the Customer at the Company's discretion.

- 19.13 Goods sold outside mainland Australia, Tasmania and New Zealand are covered by a 12-month "parts only" warranty.

20 CATALOGUES

Unless expressly stated in the Contract in writing that any representations contained in any such of FHE's catalogues or marketing documents ("Material") form part of the Contract, the Customer acknowledges that the Goods to be supplied may not possess the same properties, as to quality or specifications and size as that shown or represented in such Material.

21 SAMPLES

Unless expressly stated in the Contract, the Customer acknowledges that any Goods to be supplied under the Contract may not necessarily contain the same properties, as to quality or specification and size, as the Goods inspected by sample.

22 SPECIFICATIONS

- 22.1 Unless otherwise agreed in writing, the Goods to be supplied are subject to any specification as to weight, quantity, size, dimensions, finishes, chemical composition and physical properties as may be published generally by FHE or as may be set out in any specification issued by FHE in relation to the Goods, or, if no such specification has been published or set out, subject to such specification as is normally regarded as being commercially acceptable.
22.2 Where any specifications for the Goods are to be supplied by the Customer, they must be supplied in a reasonable time to enable FHE to complete delivery by the date for delivery
22.3 Goods over a rating of 230VAC, 20 Ampere and 415VAC are not fitted with plugs

23 CUSTOMER WARRANTIES

The Customer and any Guarantor represents and warrants to FHE that all information and representations that the Customer, or any person acting on its behalf has given in connection with FHE's transactions are true and correct and that the Customer has not failed to disclose to FHE anything relevant to its decision to have dealings with the Customer and that no court proceedings or dispute is current that may have an adverse effect on performing the Customer's obligations under these Terms. This clause does not merge.

24 CONTRACT & JURISDICTION

- 24.1 These Terms together with any other written terms signed by the Parties as contemplated in clause 1 hereof forms an agreement between the Parties ("the Contract"). The Contract is deemed to have been made at FHE's place of business in Sydney in the State of New South Wales and any cause of action is deemed to have arisen there.
24.2 The Parties agree that the Contract is governed by the exclusive jurisdiction of the Courts of New South Wales.

25 FORCE MAJEURE – FHE will not be liable for any breach of contract due to any matter or thing beyond FHE's control (including but not limited to transport stoppages, transport breakdown, fire, flood, earthquake, acts of God, strikes, lock-outs, work stoppages, wars, riots or civil commotion, intervention of public authority, explosion or accident).

26 WAIVER OF BREACH – A failure by FHE to insist on the Customer's strict performance of its obligations under these Terms or the Contract is not a waiver of any right or remedies that FHE may have, and is not a waiver of any subsequent breach or default by the Customer.

27 NO ASSIGNMENT – Neither the Contract nor any rights arising under the Contract or these Terms may be assigned by the Customer without the prior written consent of FHE which remains at FHE's sole and absolute discretion.

28 SEVERABILITY – If any provision contained in these Terms or the Contract is held by a court to be unlawful, invalid or unenforceable, such provision is severed from the Contract such that the validity and enforceability of the remaining provisions are not affected.

29 NEGOTIATIONS AND DISPUTE RESOLUTION INITIATED BY THE CUSTOMER

- 29.1 In the event that a dispute arises, the Customer agrees to comply with FHE's dispute resolution process as set out in this clause before commencing litigation proceedings in any court or tribunal.
29.2 The Customer is first required to notify FHE of the dispute by giving written notice specifying the nature of the dispute, the outcome required and the action believed necessary under the circumstances that will assist both in settling the dispute;
29.3 FHE upon receipt of such notice must, within a reasonable time, in good faith, attempt to resolve the dispute by negotiation, and if the dispute in some aspect involves payment of money, the party withholding payment is required immediately upon request deposit the disputed amount into an escrow account with instructions pertaining to the release of funds. Undisputed amounts must not be withheld and must be paid forthwith pursuant to the Terms or the Contract.

30 NOTICES

Notices must be in writing and will be effectively provided when given personally, by Express or Registered Post with delivery confirmation or by facsimile transmission or email with receipt confirmation.

31 GUARANTORS

- 31.1 All guarantors shall be jointly and severally liable for performance of all obligations of the Customer under these Terms or the Contract.
31.2 All guarantors acknowledge that FHE is not obliged to seek redress from the Customer before seeking to rely on the personal guarantees provided.
31.3 The Customer and any guarantors jointly and severally authorise FHE to exchange information about the creditworthiness of either the Customer or each of the guarantors with any credit reporting agency at any time during the term of the Contract. This clause does not merge.

WE OFFER... KITCHEN PLANNING & DESIGNING CONSULTANCY SERVICES*

BENEFITS OF KITCHEN PLANNING CONSULTANCY

- It starts with an idea...!
- Professionally designed kitchen.
- Covers major aspects of commercial kitchens.
- Helps in budgeting = Saves Money.
- Reference points for electrical, plumbing, water, drainage, exhaust, gas bank etc.
- Guideline for other agencies to sync & complete correlated work.
- Purchasing right kitchen equipment.
- Saves cost & time.
- Hassle free kitchen installations.
- It ends with a reality.

SHAPING IDEAS INTO REALITIES



BENEFITS OF A WELL DESIGNED KITCHEN



Increases staff
efficiency



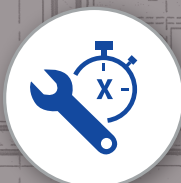
Enables to maintaining
cleanliness



Creates hygienic
work place



Smooth operations
in rush hour



Quick service time
= Happy diners



BEZZERA
Espresso Coffee Machine
MADE IN ITALY SINCE 1901



**AUSTRALASIA'S LARGEST RANGE OF COMMERCIAL
REFRIGERATION, CATERING, KITCHEN EQUIPMENT, RESTAURANT
FURNITURE, COOKWARE and TABLEWARE**



EASY WAYS TO BUY



AU: 1300 659 409
NZ: 09 415 6470



AU: 02 9771 3061
NZ: 09 415 6471



sales@foodequipment.com.au
sales@fedproducts.co.nz



spares@fedservices.com.au
service@fedproducts.co.nz



We will beat any competitors price*

*conditions apply

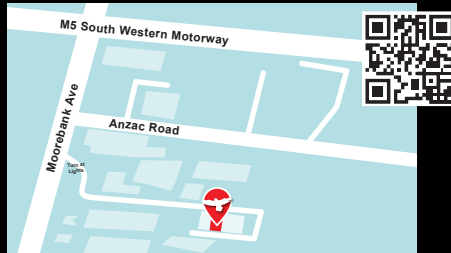
**1,000'S MORE
PRODUCTS ONLINE**

**www.foodequipment.com.au
www.fedproducts.co.nz**

**Come in today to see our range of commercial Refrigeration,
Catering, Kitchen Equipment, Cookware & Tableware**

**Head Office
NSW Call
1300 659 409**

**Head Office
3B/400 Moorebank Ave
Moorebank, NSW 2170**



**NZ Call
09 415 6470**

**146 Neilson St
Onehunga 1061
Auckland**



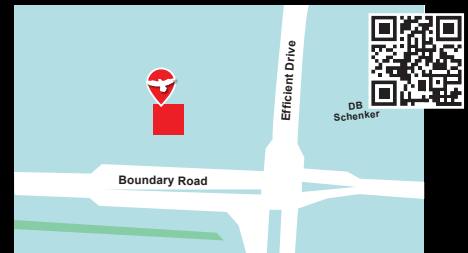
**QLD Call
1300 270 310**

**17 Homestead Dr
Stapylton, QLD 4207**



**VIC Call
1300 415 244**

**1 Efficient Dr
Truganina VIC 3029**



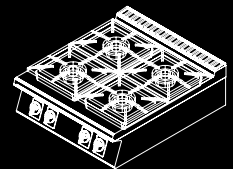
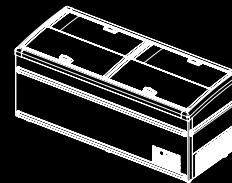
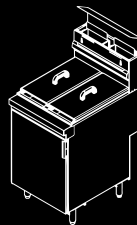
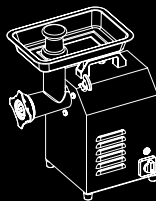
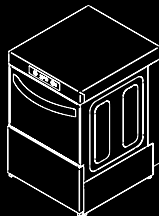
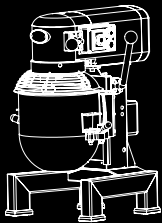
**SA Call
1300 476 236**

**4/9-11 William St
Mile End, SA 5031**



**WA Call
1300 294 687**

**Unit 5, 54 Kewdale Rd
Welshpool, WA 6106**



Can't make it in to our showroom?

No worries, try the VR 360° Tour of our showroom instead
www.foodequipment.com.au/vr360tour



09 415 6470 www.fedproducts.co.nz